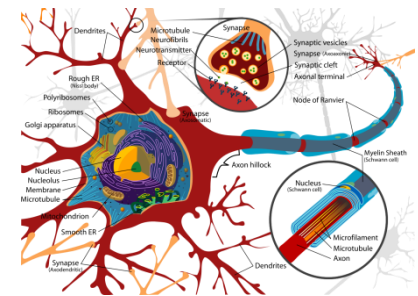


# 27th Annual Conference of



**C.E.L.L**  
Continuous Engagement  
for  
Lifelong Learners



**November 16-17**  
**Hyatt Regency-Wynfrey Hotel**  
**Hoover, Alabama**

**We are online! Join us at:**  
[www.learningforwardalabama.com](http://www.learningforwardalabama.com)  
[www.facebook.com/learningforwardalabama](http://www.facebook.com/learningforwardalabama)  
[@LFAlabama](https://twitter.com/LFAlabama) on Twitter

## Registration Fees

**Early Bird (Postmarked by Oct. 21st):**  
\$110

**Pre-registration (Postmarked by Nov. 4th):**  
\$130

**Postmarked After November 4th and Onsite:**  
\$150

*(Membership Dues are Included with registration)*

## Mail form and payment to:

Faye Allen  
Southeast Alabama Inservice Center  
025 Hawkins Hall  
Troy University  
Troy, AL 36082



*Make checks payable to  
Learning Forward Alabama.*

## Hotel Accommodations:

A block of rooms have been reserved at the Hyatt Regency-Wynfrey Hotel in Hoover. To receive the discount rate of \$139 for Standard King or Double Queen and or Club King with key access for \$159 per night, please reserve your room on or before **October 20, 2017** by calling (205) 705-1234 then press 0 and request the Learning Forward Alabama rate.

### Registration Form (Please Print Information)

Name: \_\_\_\_\_ Email Address: \_\_\_\_\_

Phone Number with Area Code: \_\_\_\_\_ Inservice Center: \_\_\_\_\_

School System and School: \_\_\_\_\_

**Registration (Please select one option):**

Early Bird Registration - \$110 (Postmarked by Oct. 21st)  Pre-registration - \$130 (Postmarked by Nov. 4th)

Registration - \$150 (Postmarked after Nov. 4th or Onsite) **Note: (Membership dues are included with registration)**

**Site Visit Preferences (Please rank 1-4 with 1 being your first choice):**

\_\_\_\_\_ **Helena Intermediate School** \_\_\_\_\_ **Irondale Middle School**  
\_\_\_\_\_ **Wilkerson Middle School** \_\_\_\_\_ **Calera High School**

## Conference Overview - Day 1 Thursday, November 16, 2017

- 7:30 am - 8:15 a.m. Breakfast/Registration
- 8:30 a.m. Depart for Site Visits
- 10 a.m. -12 p.m. Conference Registration
- 11:30 a.m. Return from Site Visits
- 1:00 p.m. - 1:30 p.m. Opening Session  
(Dr. Barbara Cooper)
- 1:45 - 2:45 p.m. Concurrent Sessions I
- 2:45 – 3:00 p.m. Break
- 3:00 – 4:00 p.m. Concurrent Sessions II

### Friday, Keynote Speaker: **Dr. Marcia L. Tate** Developing Minds, Inc.



**Marcia L. Tate, EdD**, is the former Executive Director of Professional Development for the DeKalb County School System, Decatur, Georgia. During her 30-year career with the district, she has been a classroom teacher, reading specialist, language arts coordinator, and staff development executive director. She received the 2001 Distinguished Staff Developer Award for the State of Georgia and her department was chosen to receive the Exemplary Program Award for the state.

Marcia is currently an educational consultant and has taught over 500,000 administrators, teachers, parents, and business and community leaders throughout the world. She is the author of the following eight best-sellers: (1) *Worksheets Don't Grow Dendrites: 20 Instructional Strategies that Engage the Brain* – (3<sup>rd</sup> Ed.); (2) *“Sit & Get” Won't Grow Dendrites: 20 Professional Learning Strategies that Engage the Adult Brain* – (2<sup>nd</sup> Ed.); (3) *Reading and Language Arts Professional Learning Strategies that Engage the Adult Brain* – (2<sup>nd</sup> Ed.); (3) *Reading and*

## Conference Overview - Day 2 Friday, November 17, 2017

- 7:30 - 8:15 a.m. Breakfast/LFA  
Business Meeting
- 8:15 - 10:15 a.m. Keynote Speaker  
(Dr. Marcia L. Tate)
- 10:15 - 10:30 a.m. Break
- 10:30 a.m. - 12:30 p.m. Closing Keynote  
(Dr. Marcia L. Tate)

*Language Arts Worksheets Don't Grow Dendrites: 20 Literacy Strategies that Engage the Brain* – (2<sup>nd</sup> Ed.); (4) *Shouting Won't Grow Dendrites: 20 Techniques to Detour Around the Danger Zones* – (2<sup>nd</sup> Ed.); (5) *Mathematics Worksheets Don't Grow Dendrites – 20 Numeracy Strategies That Engage the Brain and* (6) *Preparing Children for Success in School and Life: 20 Ways to Increase Your Child's Brain Power;* (7) *Science Worksheets Don't Grow Dendrites: 20 Instructional Strategies That Engage the Brain;* and (8) *Social Studies Worksheets Don't Grow Dendrites: 20 Instructional Strategies That Engage the Brain;* and her latest book, *Formative Assessment in a Brain-compatible Classroom: How Do We Really Know They're Learning?* Participants in her workshops refer to them as *the best ones they have ever experienced* since Marcia uses the 20 strategies outlined in her books to actively engage her audiences.

Marcia received her bachelor's degree in psychology and elementary education from Spelman College in Atlanta, Georgia. She earned her Master's degree in remedial reading from the University of Michigan in Ann Arbor, her specialist degree in educational leadership from Georgia State University and her doctorate in educational leadership from Clark Atlanta University. Spelman College awarded her the Apple Award for excellence in the field of education.

Marcia is married to Tyrone Tate and is the proud mother of three children: Jennifer, Jessica, and Christopher; and seven grandchildren: Aaron, Aidan, Christian, Maxwell, Roman, Shiloh, and Aya.

## Site Visits to Schools

Buses will depart from the Hyatt Regency-Wynfrey Hotel at 8:30 A.M. and return by 11:30 A.M. Please rank your preferences for site visits on your registration form. Due to limited bus capacity scheduling is filled on a first-come-first-served basis.

### Helena Intermediate School

Helena Intermediate School serves 972 students in grades 3-5. We have participated in the Great Kindness Challenge each school year and have earned the distinction of a Kindness Certified School. Our tagline is #BeTheDifference and we have recently built a #BeTheDifference Diner where students earn the privilege (based on good character) of eating their lunch here. When you walk into our classrooms, you will notice teachers differentiating by teaching in small groups – either Tier 2 instruction or even Tier 1. You will also see technology being utilized throughout the day. Many of our teachers have received technology through Donor's Choose and it is also our focus to use State Technology funds to equip each classroom with five Chromebooks.

### Wilkerson Middle School

Wilkerson Middle School is a Birmingham City award winning school. They recently received the 2017 Explore Learning School Leadership Award. They believe in educating the whole child through project based learning. They offer such special programs as Read 180, Robotics Team, GREAT Program and a Gifted: College Bound Program with UAB. Of special interest is their hydroponics garden along with aquaponics and reverse osmosis system. They are a CLAS Banner School and a Title I School of Distinction and a Torchbearer School.

### Irondale Middle School

Irondale Middle is a Jefferson County school serving approximately 600 students in grades 6-8. It is a Title I school with over 76% free and reduced lunches. We prepare our students to be life-long learners through modular teaching using the Literacy Design Collaborative (LDC) and Math Design Collaborative (MDC). We are committed to strategic teaching, rigorous learning and a positive environment so that all learners are on track to be college and career ready.

### Calera High School

Calera High School has started a new open lunch model that provides us with the opportunity to pair all students with an advisor (small group) one day a week and allows them the other four days to seek academic assistance (voluntary or required), participate in clubs, and experience a degree of choice during the school day. It's still very new and very much a work in progress, but we've already seen lots of positives. We'll share this plan with you and let you hear from a panel of students about their experience. Questions will be welcomed. During walk-throughs, you'll see our teachers using low-stakes writing as a means of learning. Our goal is to give students more opportunities to produce thoughtful writing and facilitate their thinking through quick writes.