

AAMU Facilities Index

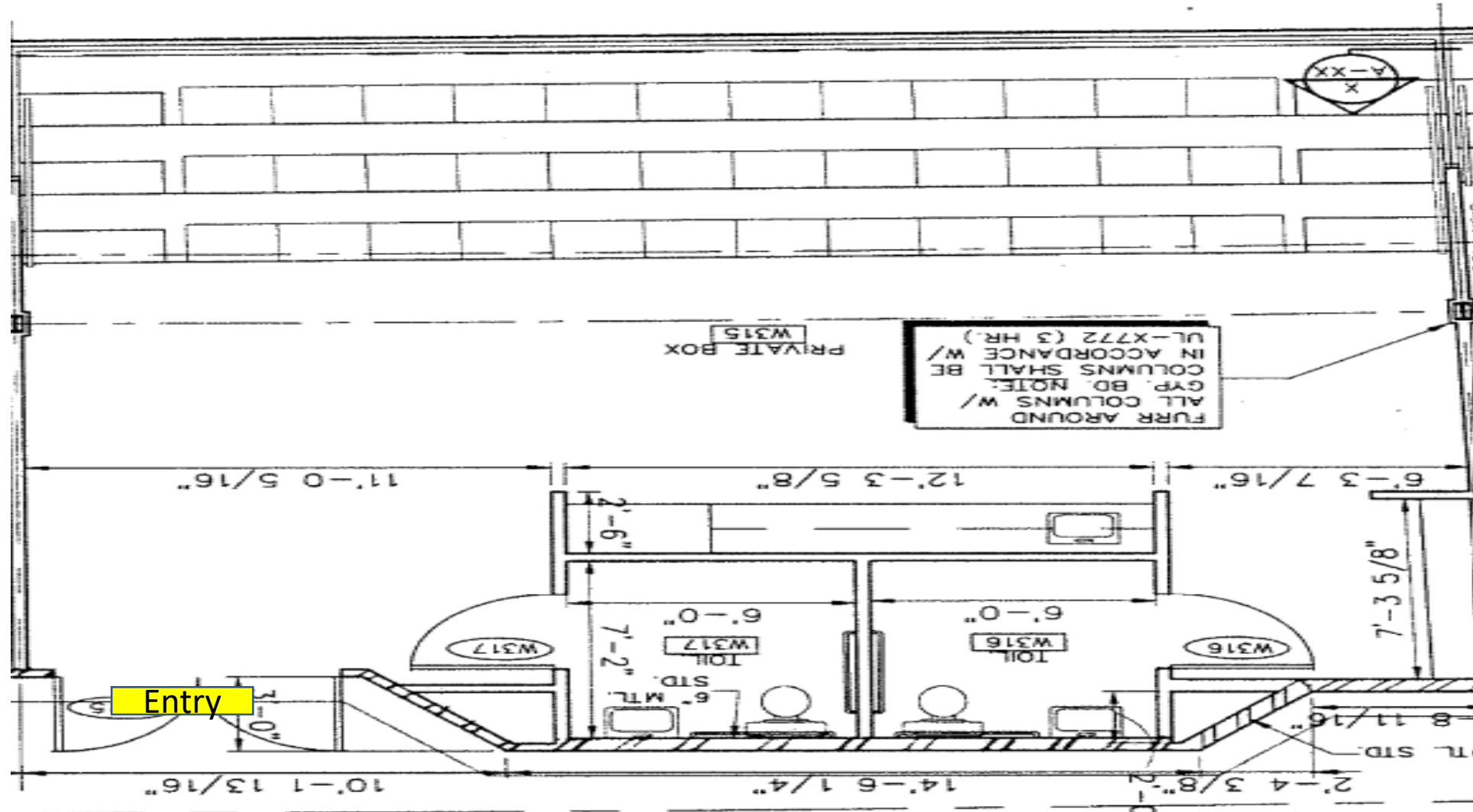
- [Agribition Center Capacity 1,493](#)
 - [Alumni Skybox Capacity 48](#)
 - [ARC Capacity 120](#)
 - [Athletic Skybox Capacity 48](#)
- [Buchanan Auditorium 458 Capacity](#)
 - [Clyde Foster Capacity 200](#)
- [Dawson Auditorium Capacity 298](#)
- [Elmore Gym 1st Floor Capacity 1,100](#)
- [Event Center Level Floor Plan Quadrant B Capacity 3,283](#)
- [Event Center Concourse Level Floor Plan Quadrant C Capacity 3,833](#)
- [Event Center 107A & 107B Capacity 94 \(47 utilizing partition\)](#)
 - [Event Center 108 Capacity 96](#)
 - [Foster Cafeteria Capacity 275](#)
 - [Knight Exhibit Hall Capacity 250](#)
 - [Knight Dining Capacity 383](#)
- [Ralph Lee Student Center Capacity 97](#)
- [Stadium Skybox Suites Lower Level Capacity 24](#)
- [Stadium Skybox Suites Upper Level Capacity 24](#)
- [Welcome Center Conference Room 1st Floor Capacity 171](#)
 - [Welcome Center Food Court Capacity 400](#)

Capacity 1,493

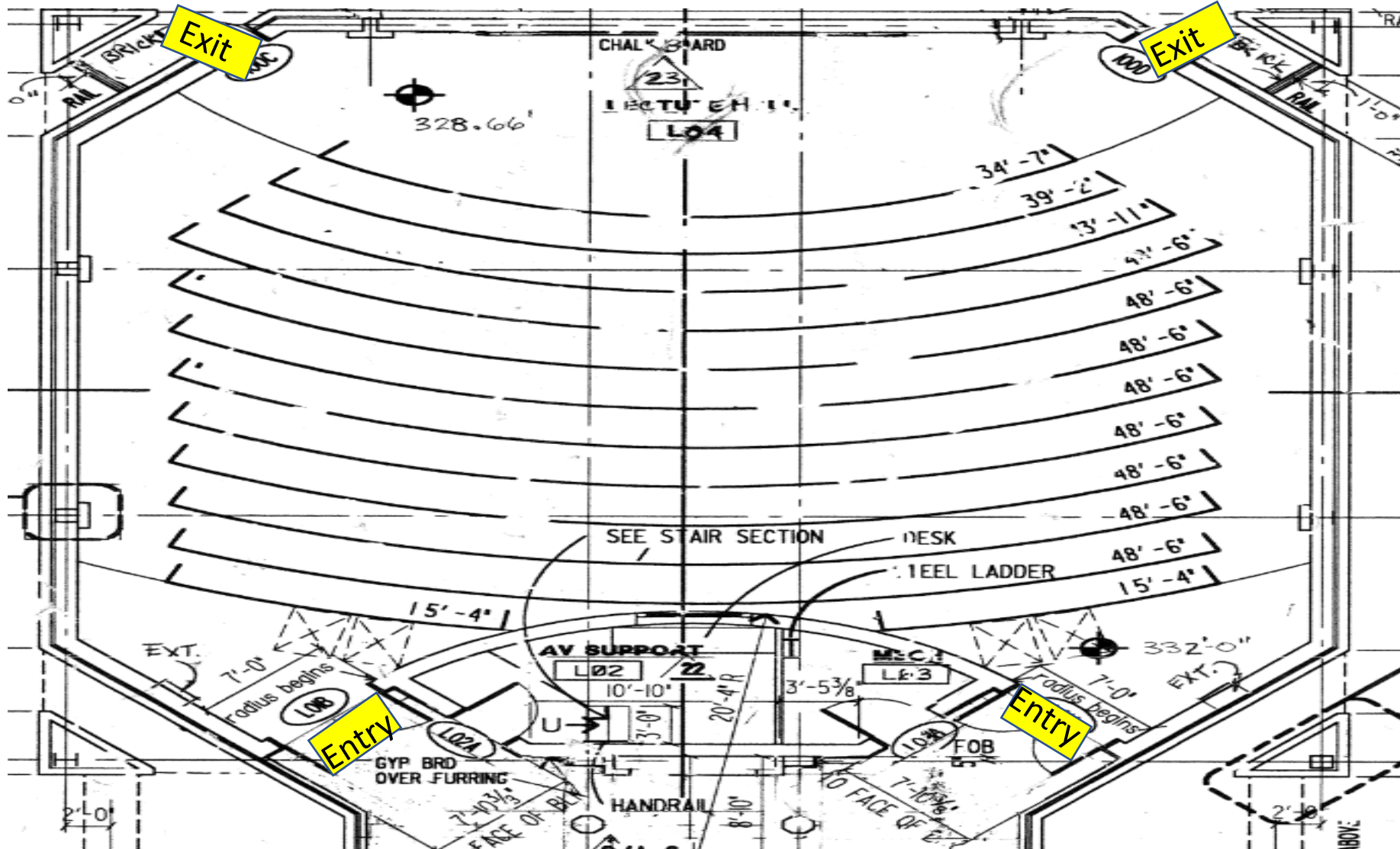


Alumni Skybox

Capacity 48

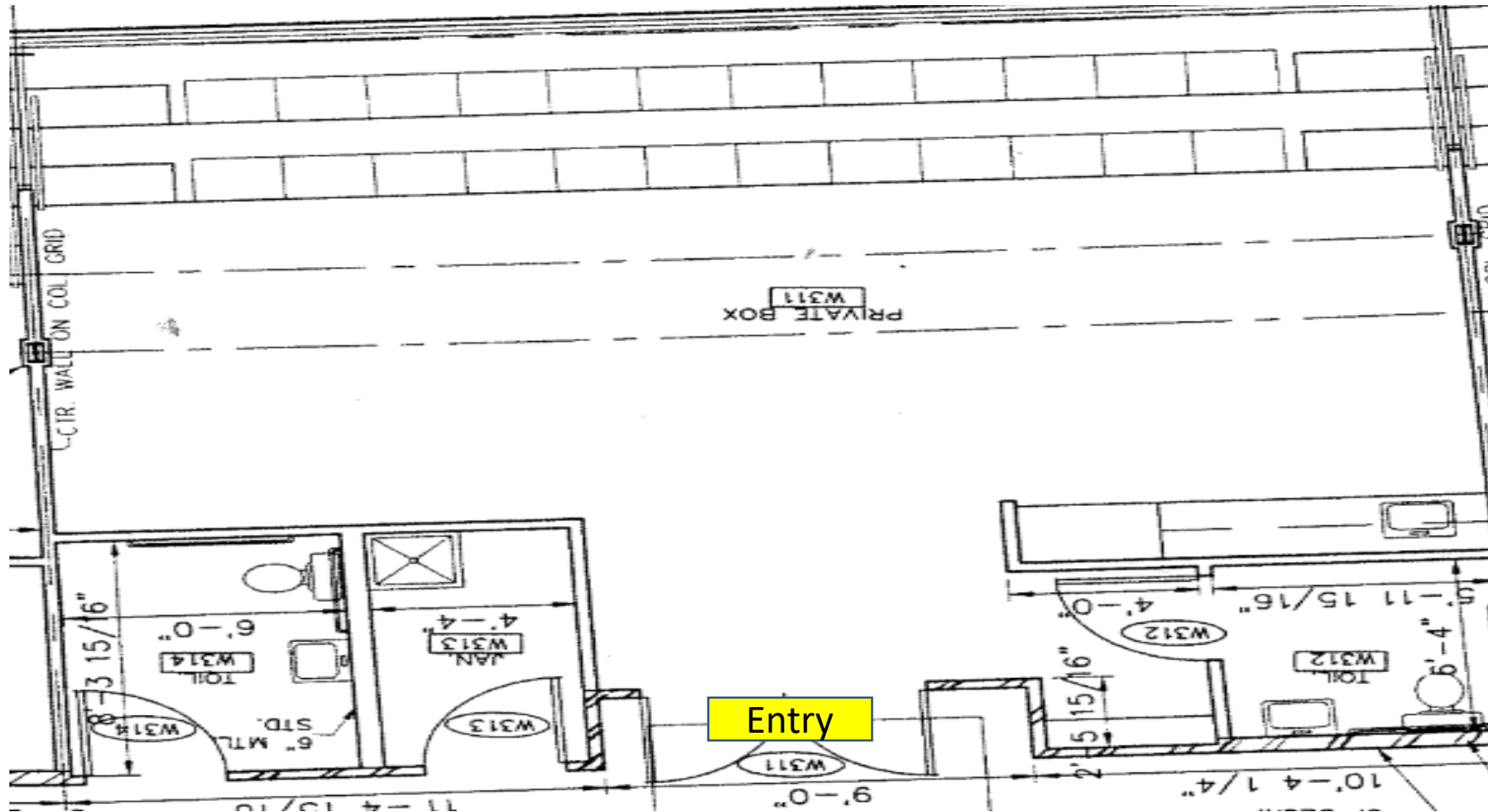


Capacity 120



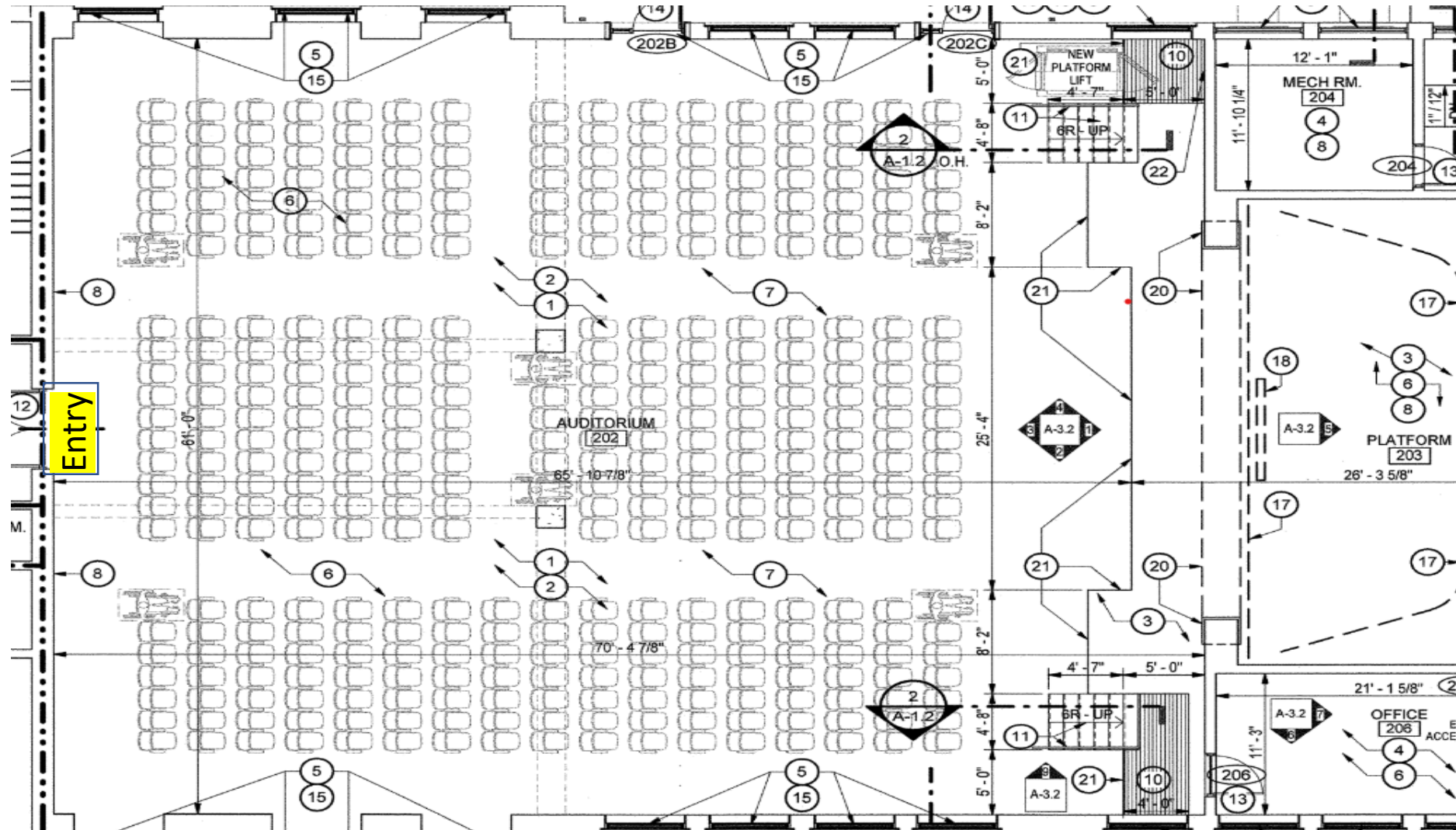
Athletic Skybox

Capacity 48



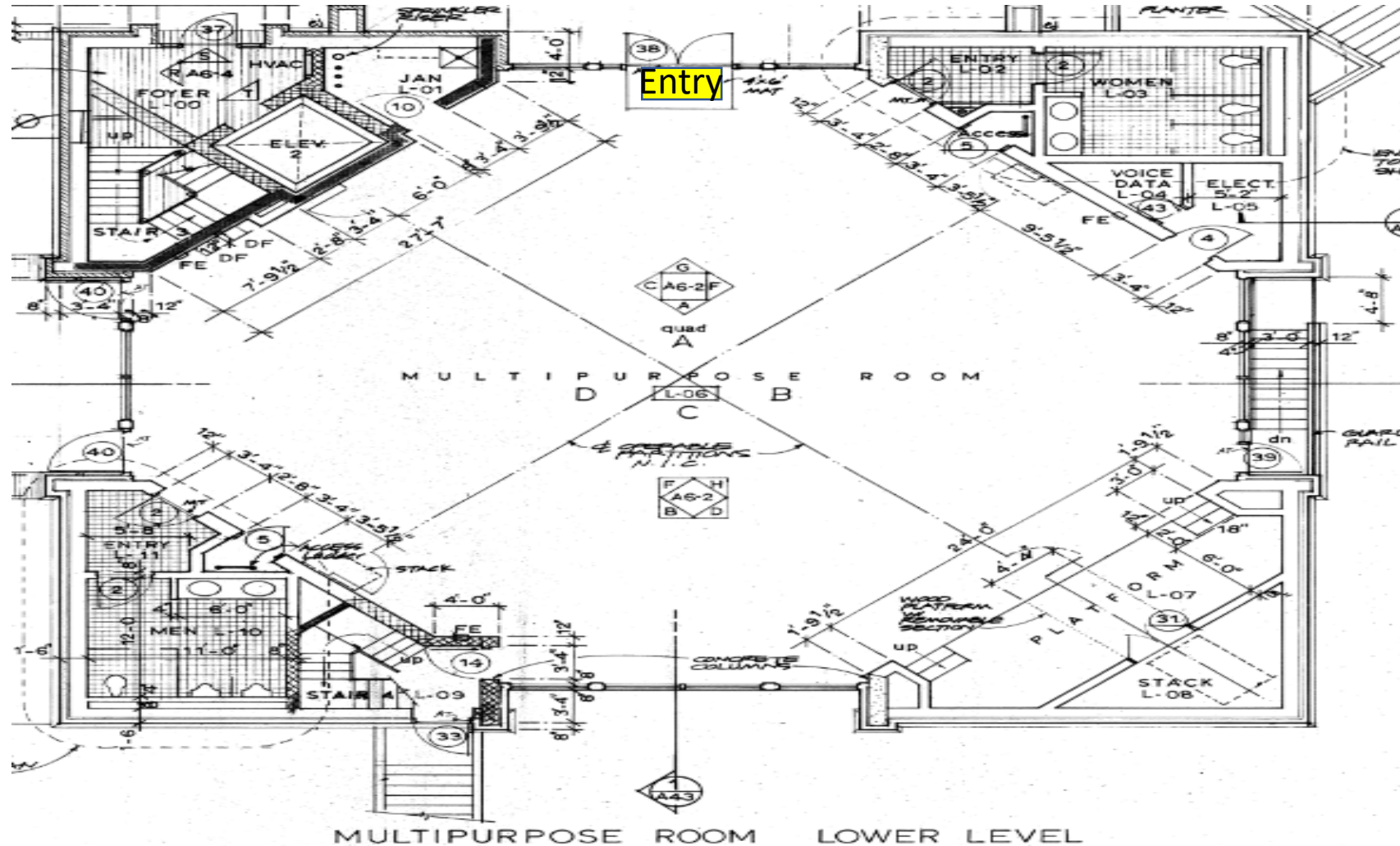
Buchanan Auditorium

Capacity 458



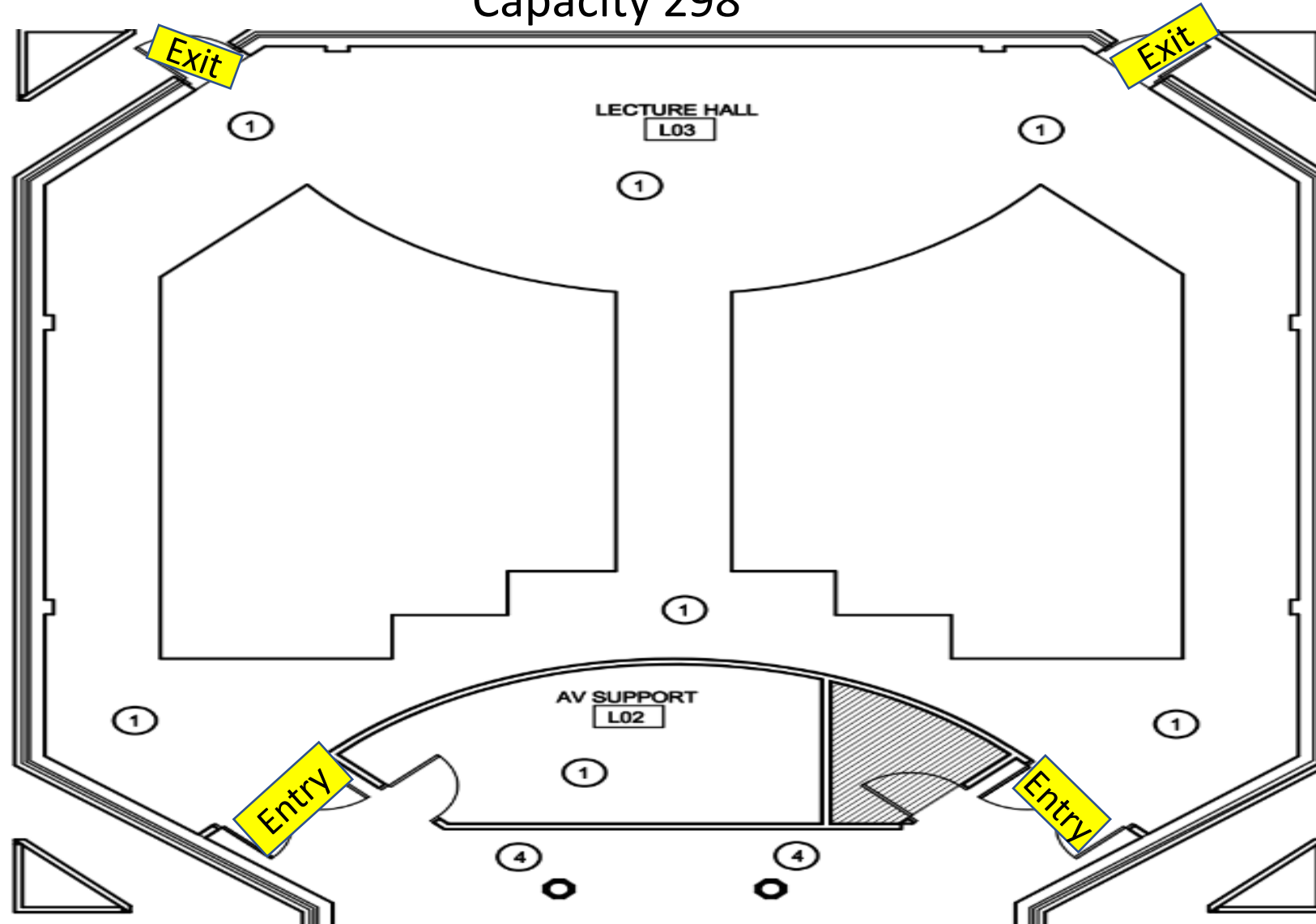
Clyde Foster

Capacity 200



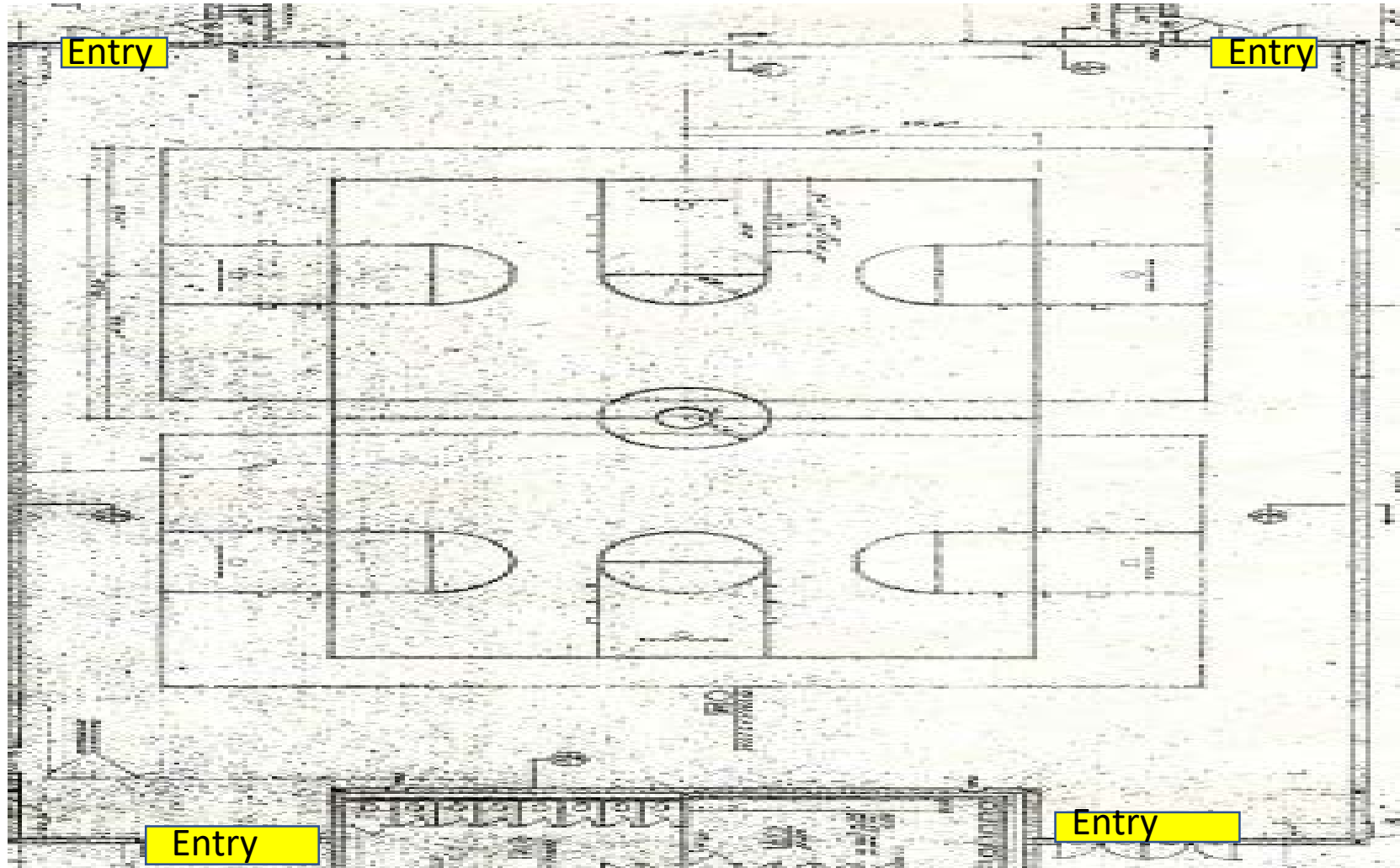
Dawson Auditorium

Capacity 298



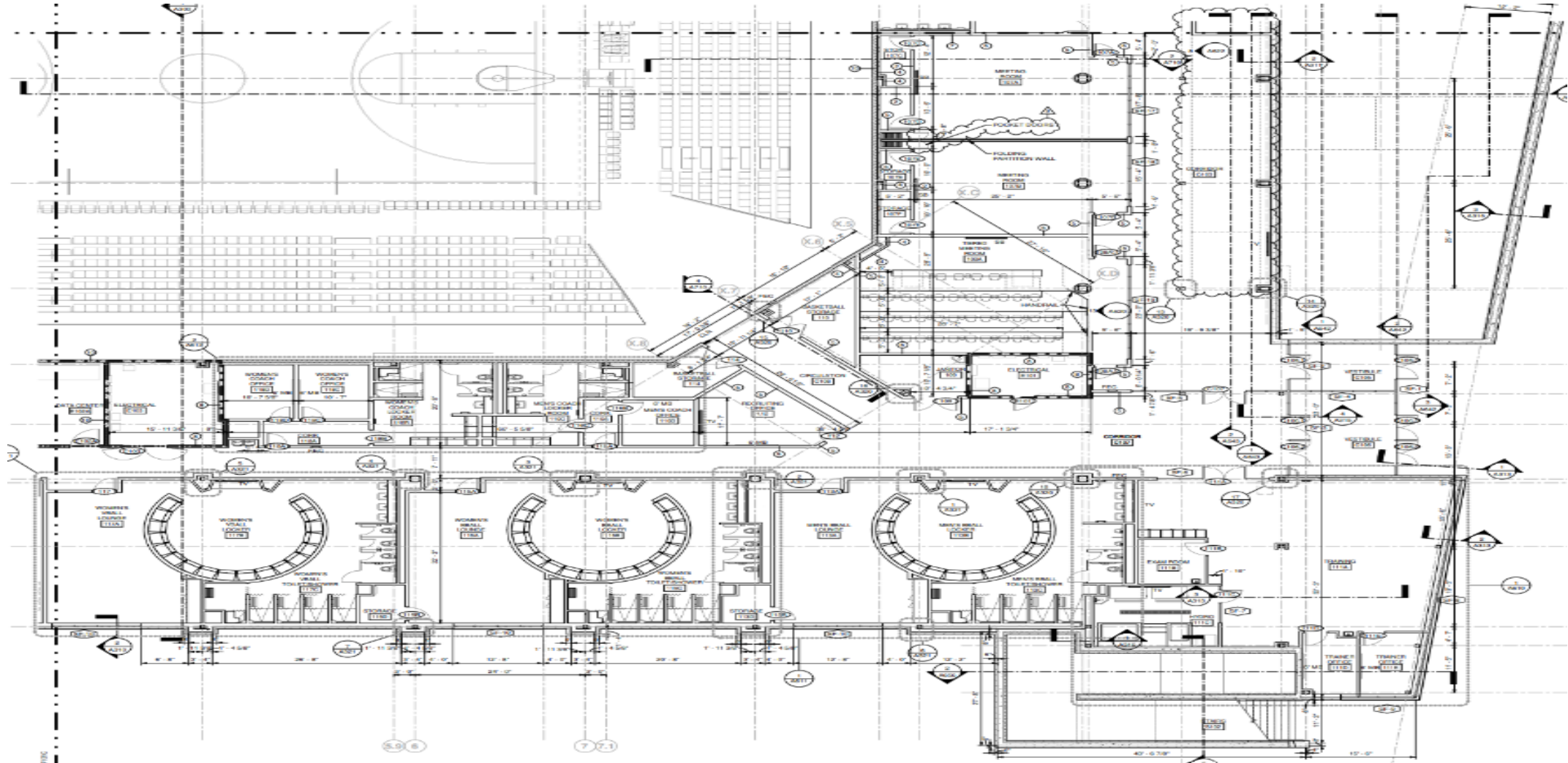
Elmore Gym 1st Floor

Capacity 1,100



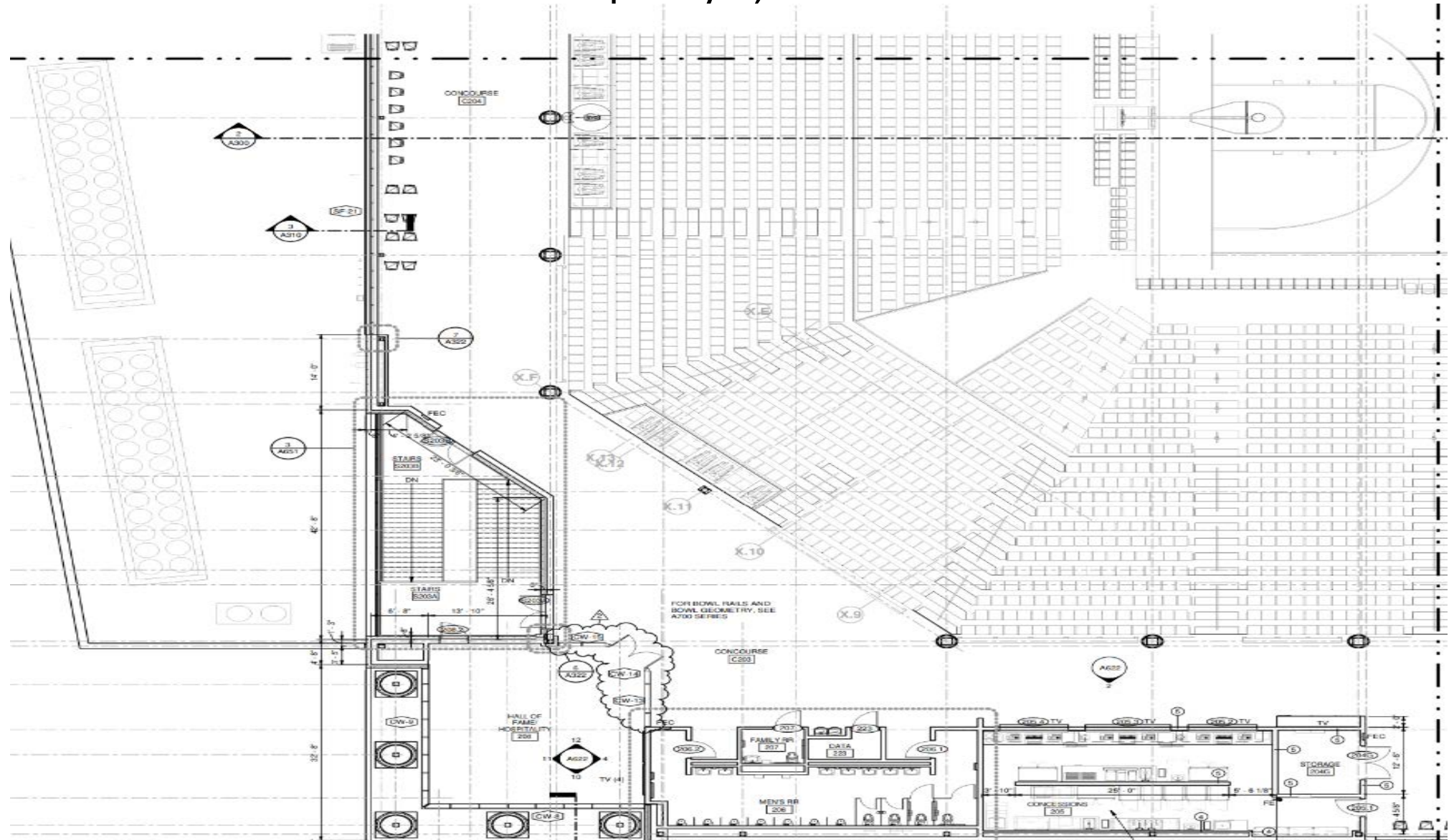
Event Center Level Floor Plan Quadrant B

Capacity 3,283



Event Center Concourse Level Floor Plan Quadrant C

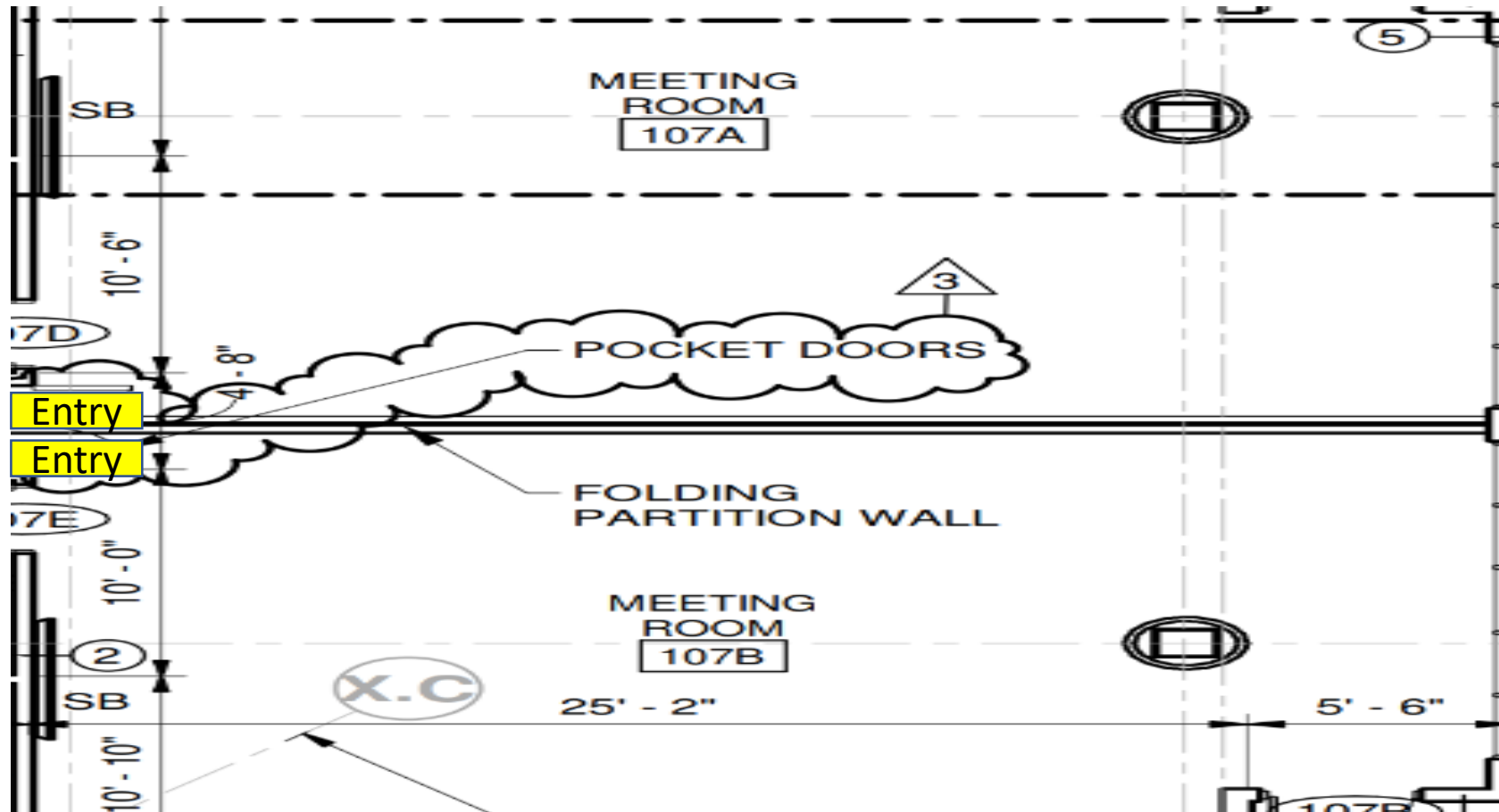
Capacity 3,833



Event Center 107A & 107B

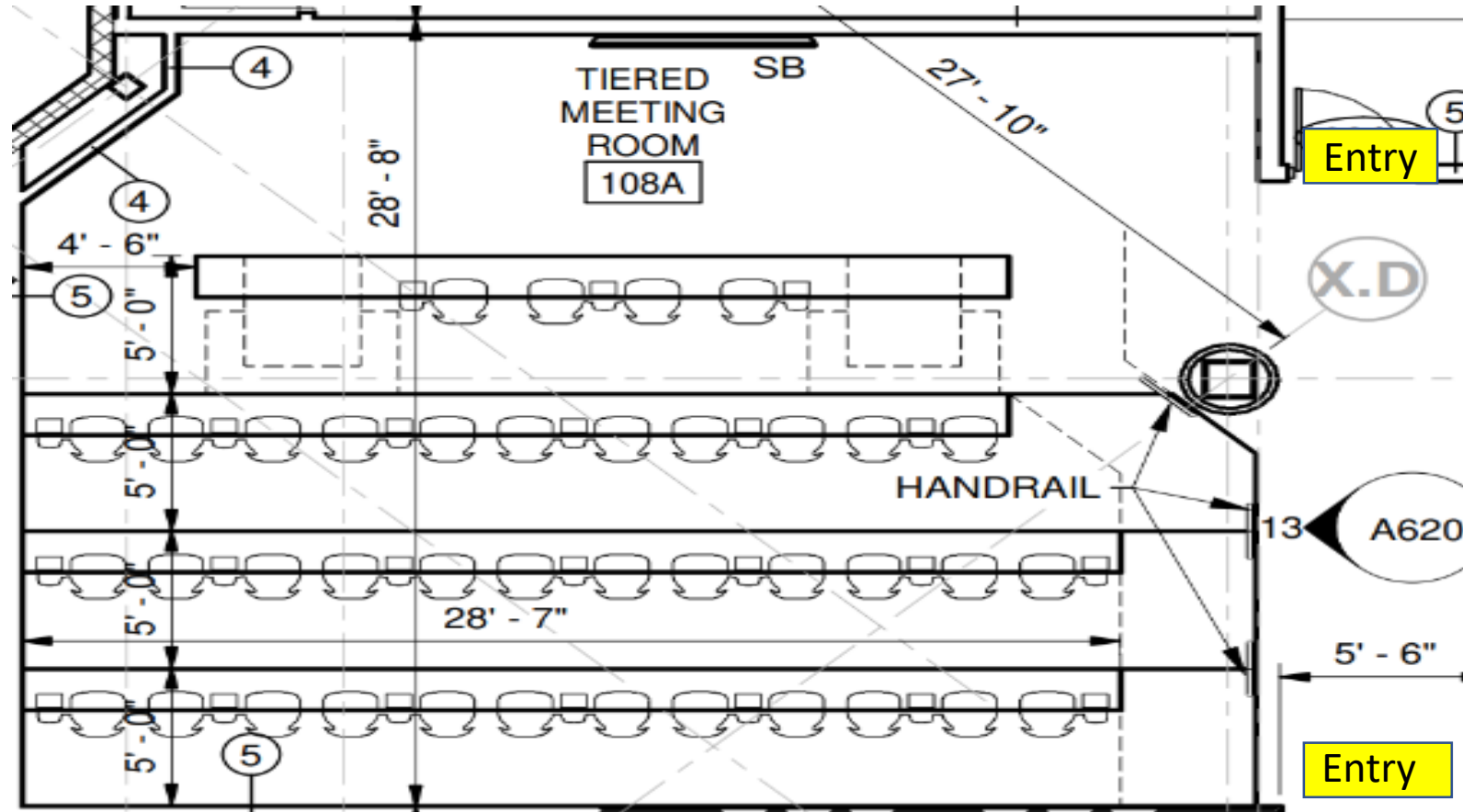
Capacity 94 Full Room

Capacity 47 utilizing Partition



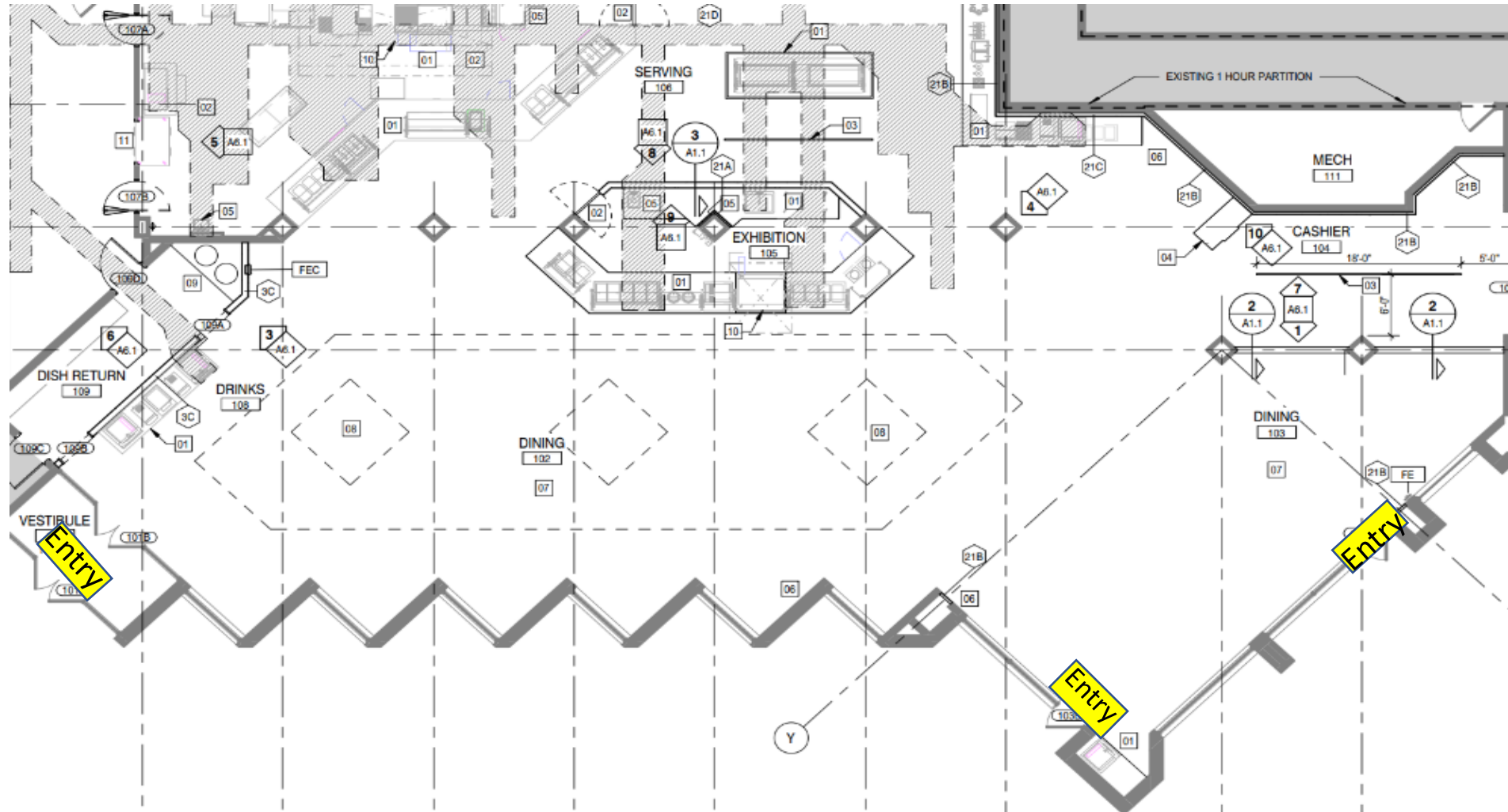
Event Center 108

Capacity 69



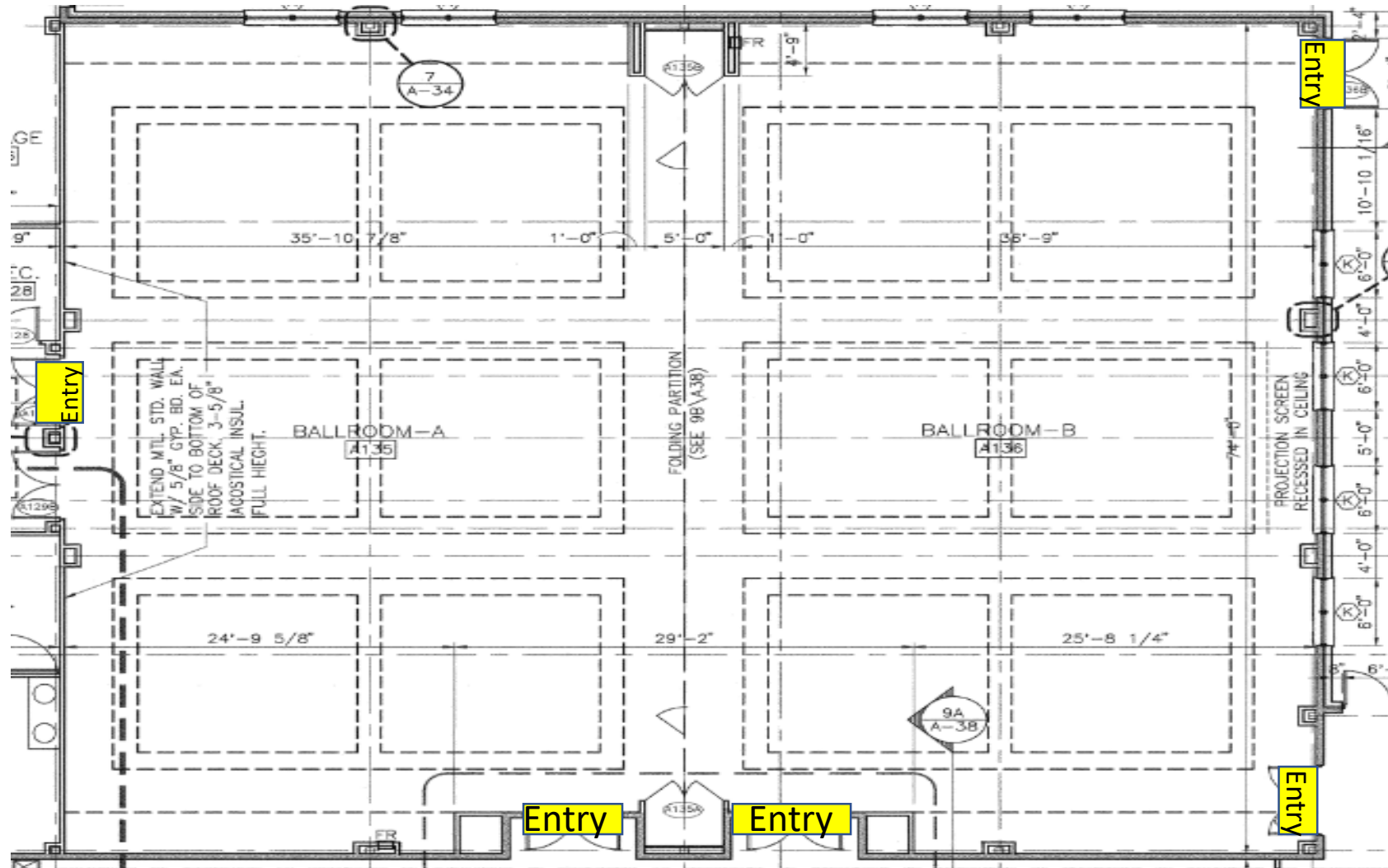
Foster Cafeteria

Capacity 275

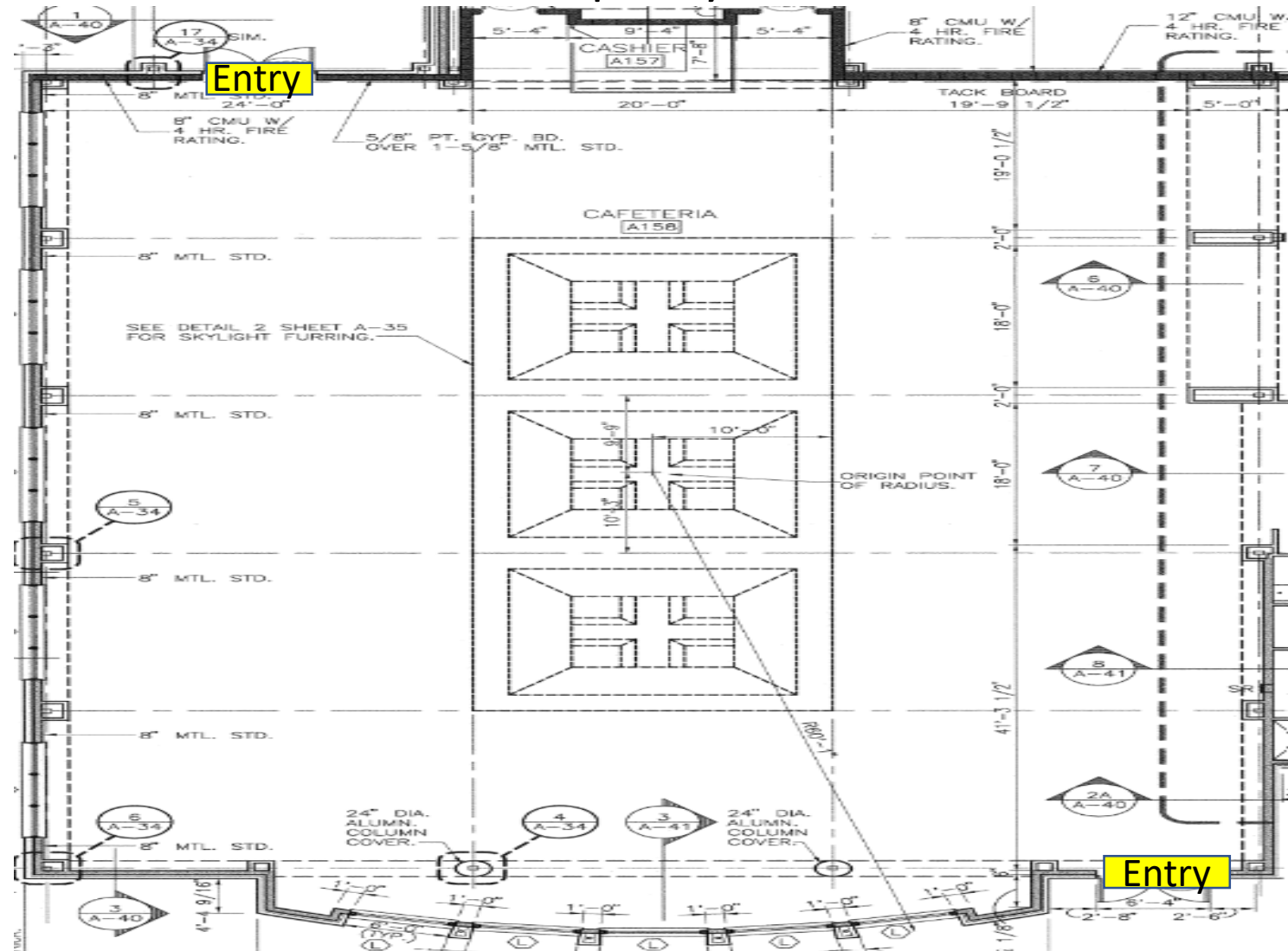


Knight Exhibit Hall

Capacity 250

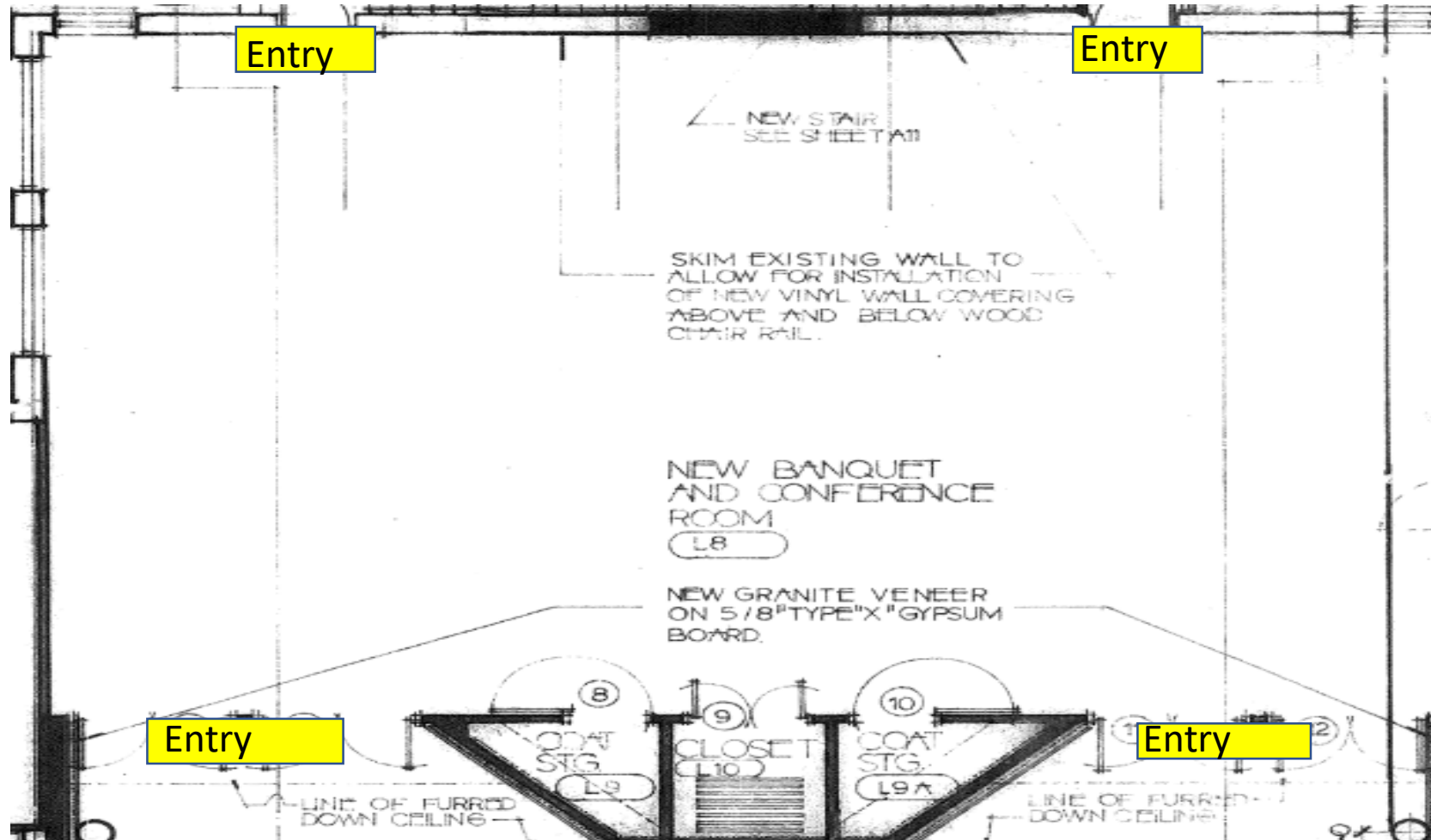


Capacity 383

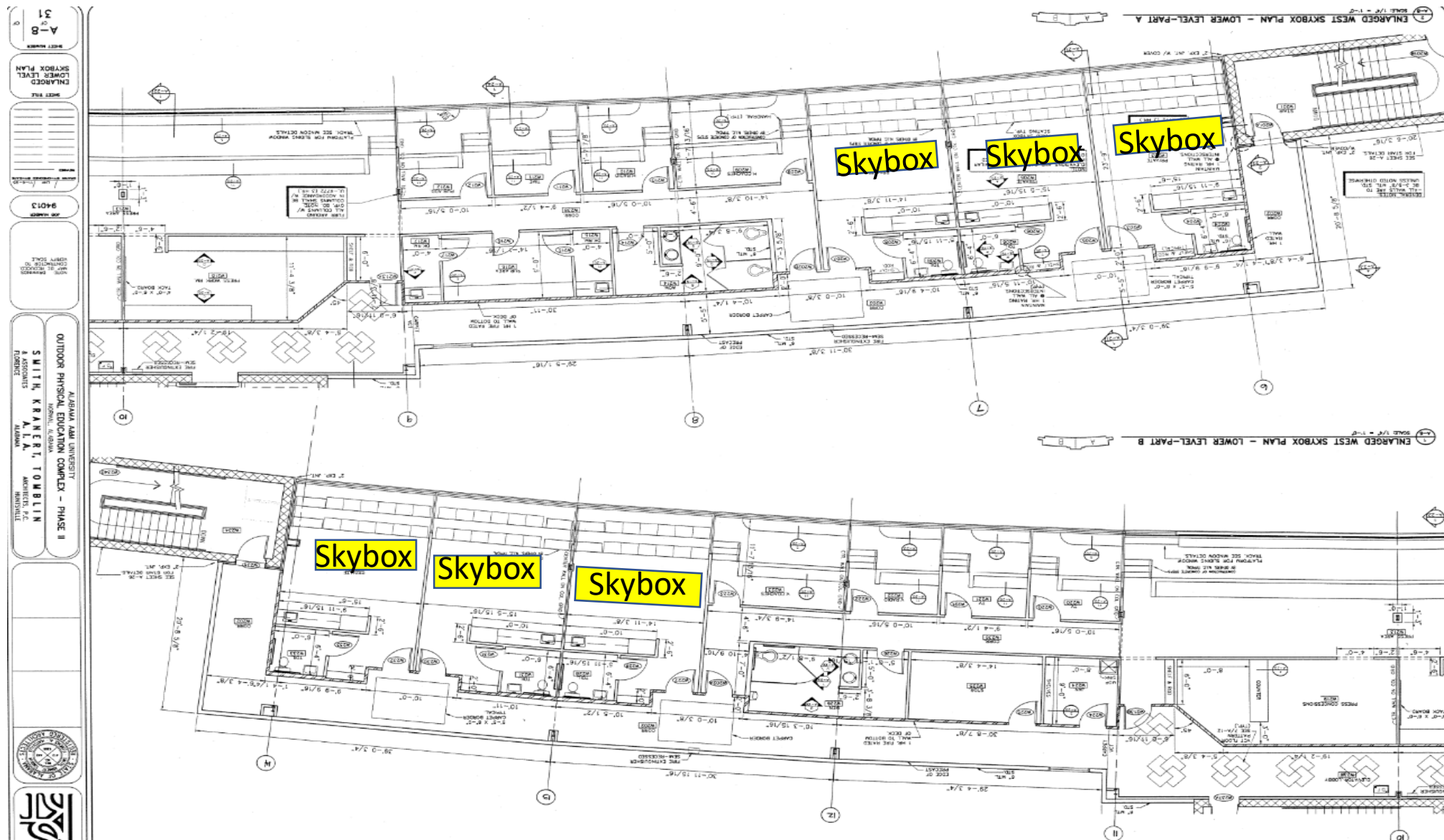


Ralph Lee Student Center

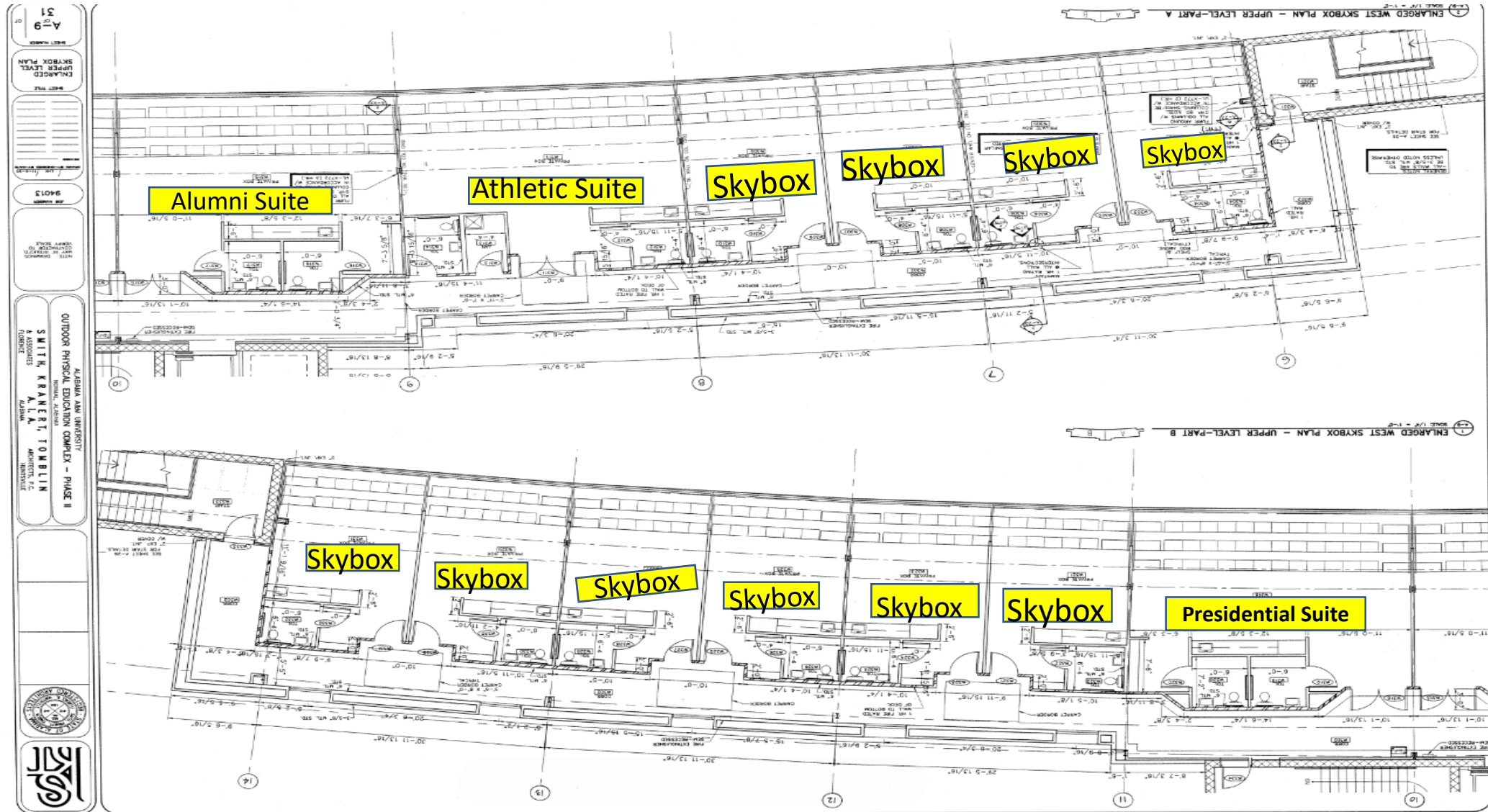
Capacity 97



Capacity 24

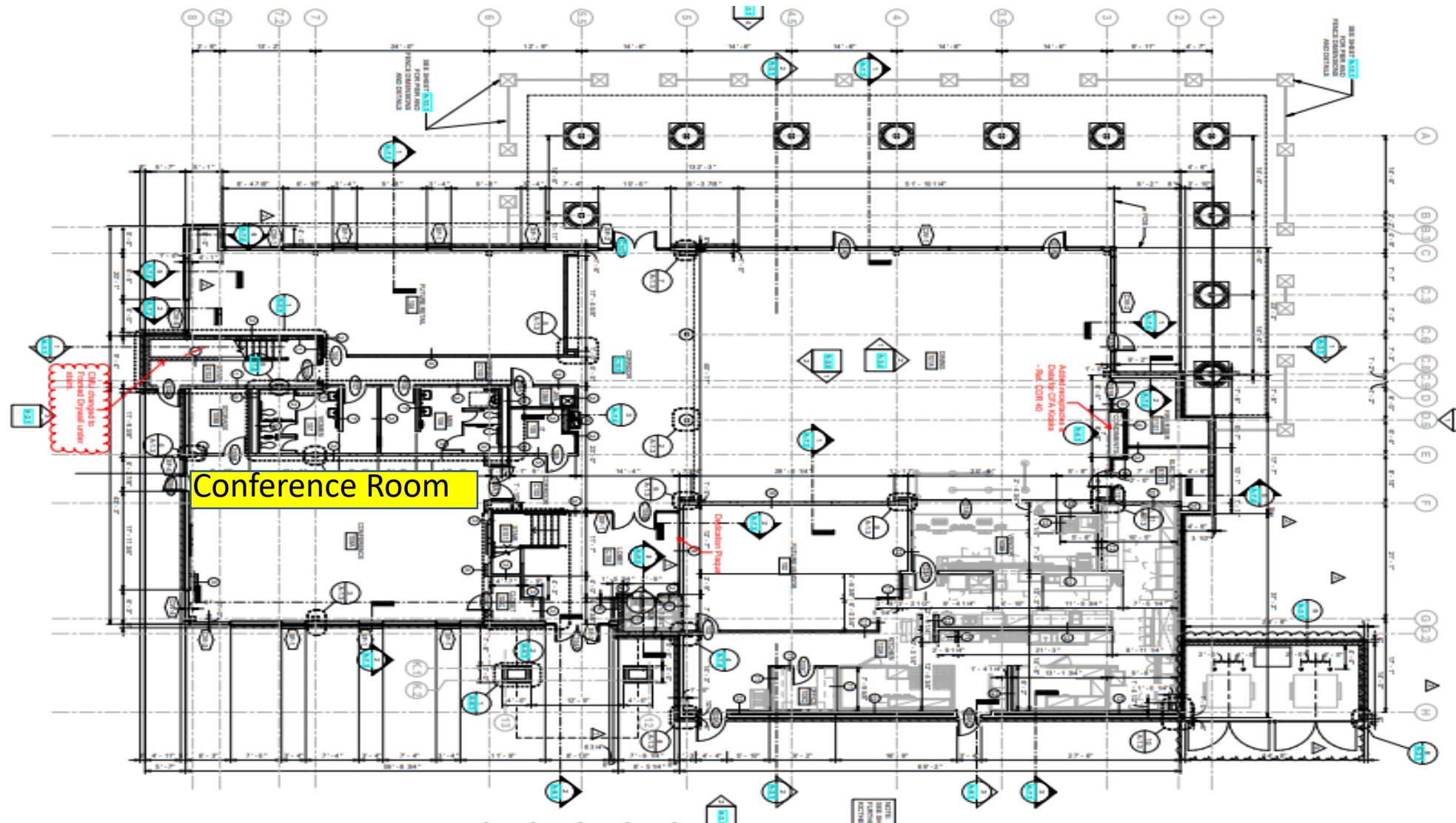


Capacity 24



Welcome Center Conference Room 1st Floor

Capacity 171



Welcome Center Food Court

Capacity 400

