

## **SECTION 00 91 14**

### **ADDENDUM NUMBER 5**

#### **PARTICULARS**

- 1.01 DATE: MARCH 31, 2021**
- 1.02 PROJECT: WELCOME CENTER**
- 1.03 PROJECT NUMBER: DCM NO. 2020604**
- 1.04 OWNER: ALABAMA A&M UNIVERSITY**
- 1.05 ARCHITECT: NOLA | VAN PEURSEM ARCHITECTS, PC**

#### **TO PROSPECTIVE BIDDERS**

- 2.01 THIS ADDENDUM FORMS A PART OF THE CONTRACT DOCUMENTS AND MODIFIES THE BIDDING DOCUMENTS DATED JANUARY 25, 2021, WITH AMENDMENTS AND ADDITIONS NOTED BELOW.**
- 2.02 ACKNOWLEDGE RECEIPT OF THIS ADDENDUM IN THE SPACE PROVIDED IN THE PROPOSAL FORM. FAILURE TO DO SO MAY DISQUALIFY THE BIDDER.**
- 2.03 THIS ADDENDUM CONSISTS OF 4 PAGES.**

#### **CHANGES TO THE PROJECT MANUAL**

- 3.01 APPROVED EQUALS, these approvals are based solely upon the manufacturers meeting all conditions of drawings and specifications presently set.**
  - A. Section 09 30 00 -Tiling
    - 1. Sabbia Marmo by Marazzi for Porcelain Wall Tile Type PT-1
    - 2. Sabbia Marmo by Marazzi for Porcelain Paver Tile Type PT-2
    - 3. Modtique by Florida Tile for Porcelain Paver/ Stair Tile Type PT-3
  - B. Section 12 24 00 - Roller Shades: Springs Window Fashions, LLC (SWF).
  - C. Section 26 65 20 – Fire Alarm and Mass Notification System: Silent Knight by Honeywell (non-proprietary)

#### **CHANGES TO THE DRAWINGS**

##### **4.01 SHEET A-2.1 – EXTERIOR BUILDING ELEVATIONS**

- A. Revise this sheet as follows:
  - 1. Remove all notes identifying Spandrel Glass. See Sheet A-5.3 for spandrel glass locations.

**4.02 SHEET A-5.3 – CURTAINWALL ELEVATIONS**

- A. Add the following general note: "Gray hatched panes indicate spandrel glass. See specifications."

**4.03 SHEET A-7.3 – WALL SECTIONS**

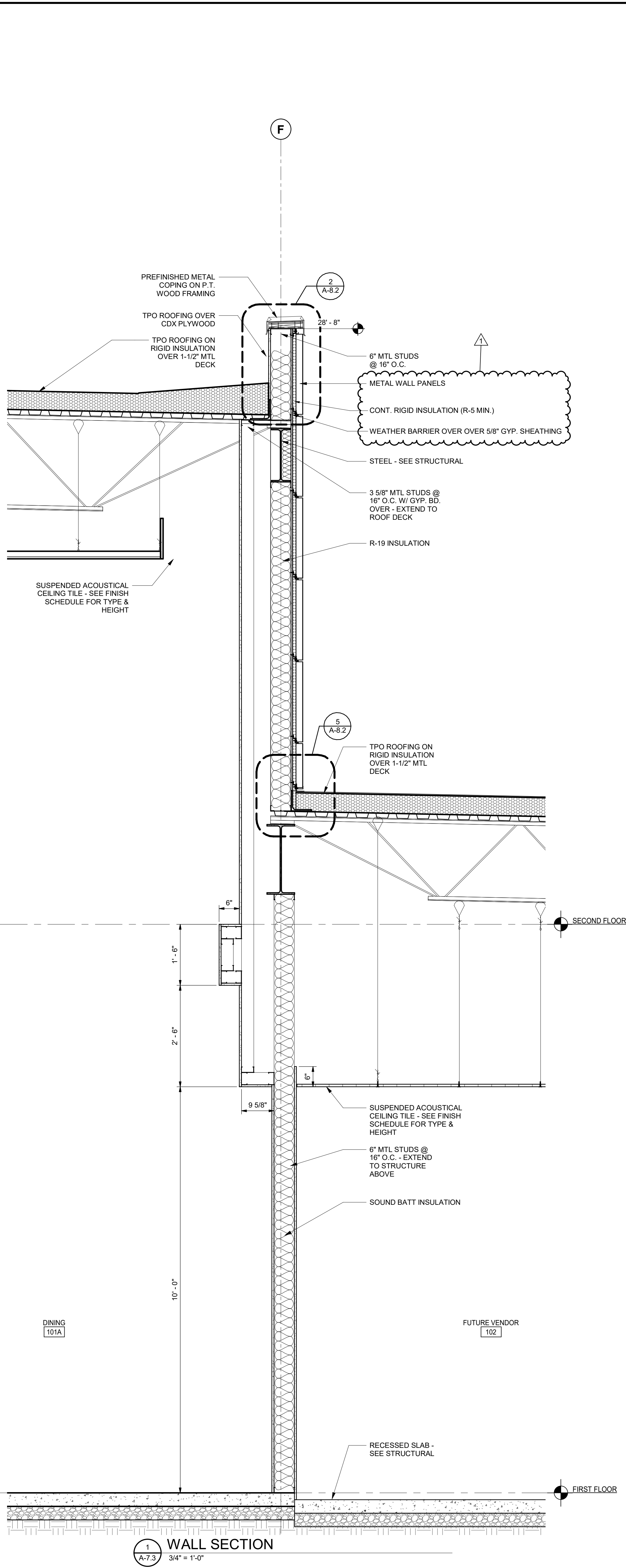
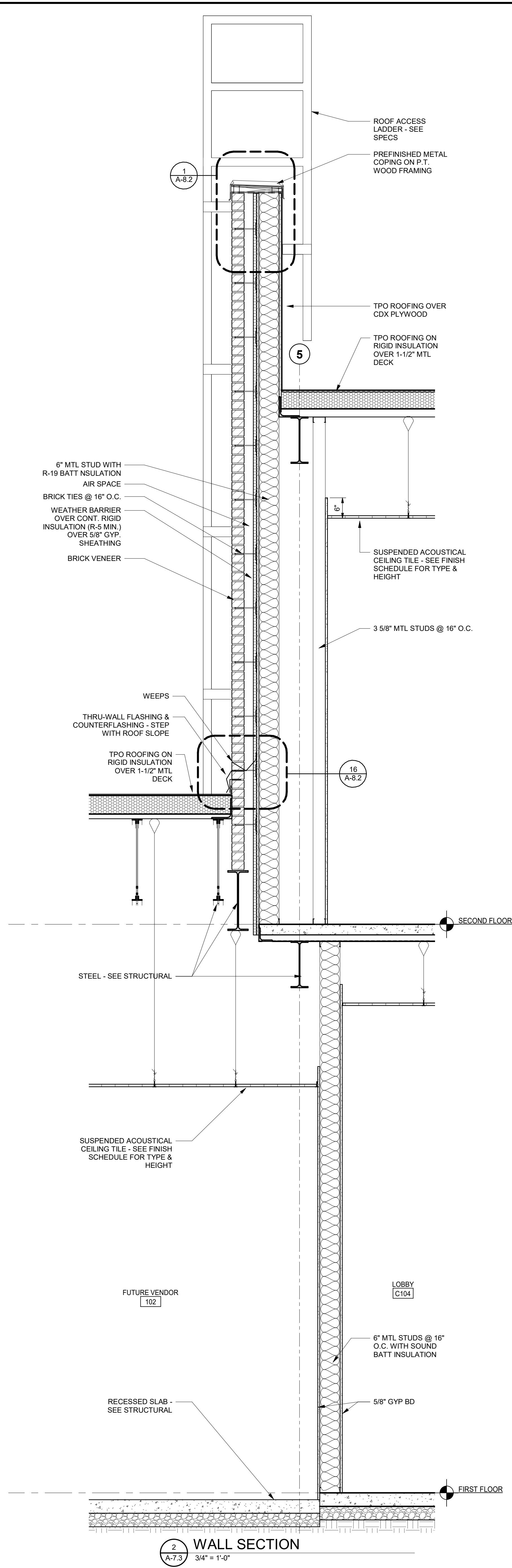
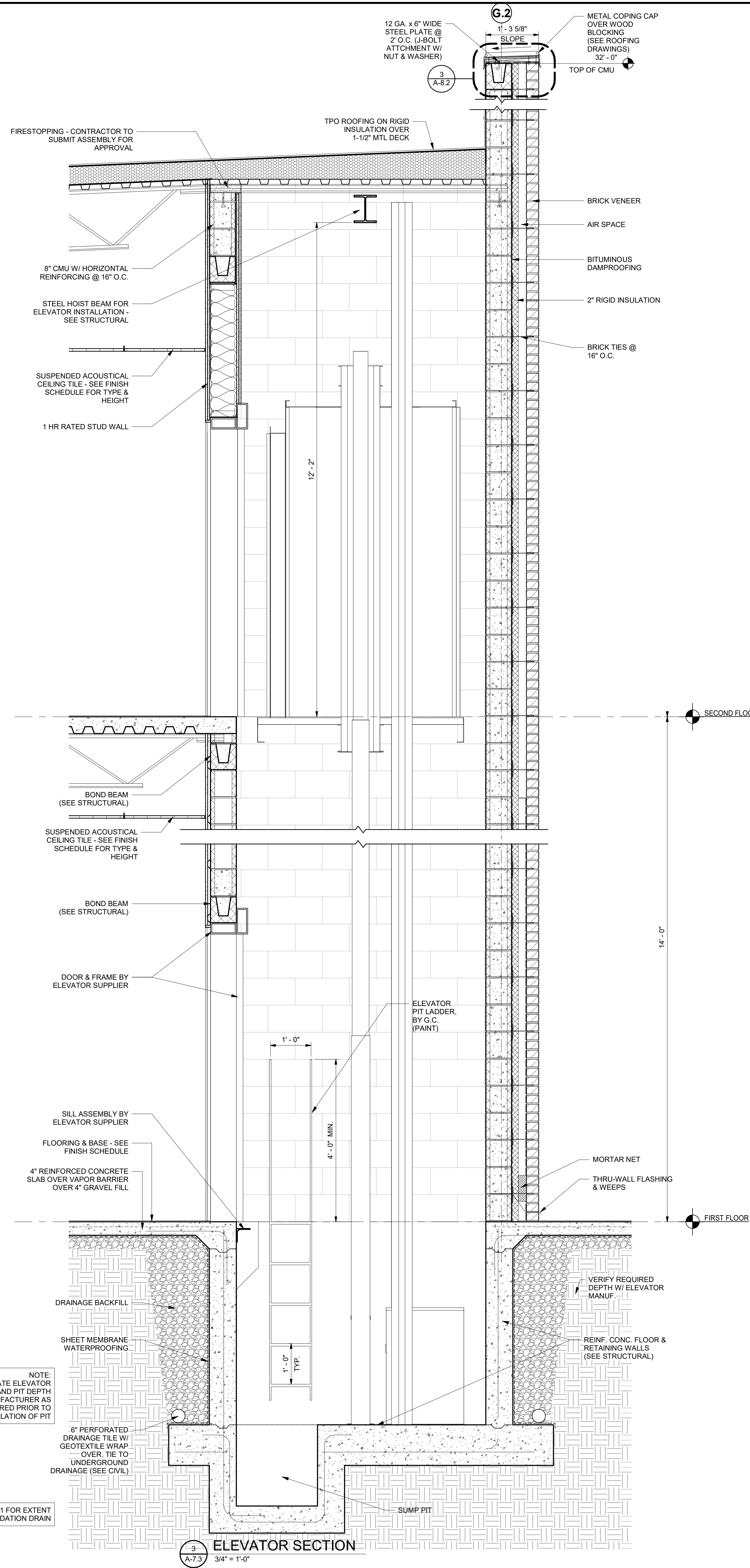
- A. Replace this sheet in its entirety. Revisions include the following:
  - 1. Updated notes to add weather barrier.

**4.04 SHEET A-7.4 – WALL SECTIONS**

- A. Replace this sheet in its entirety. Revisions include the following:
  - 1. Added detail of University Logo Button sign

**END OF ADDENDUM NUMBER 4**

C:\Revit\Local Files\A&M Welcome Center\A&M WELCOME CENTER - LAURA LOCAL.rvt 3/31/2021 5:00:37 PM

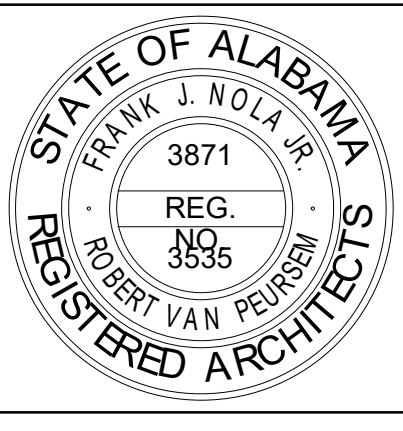


NOTE:  
COORDINATE ELEVATOR  
HOISTWAY SIZE AND PIT DEPTH  
WITH MANUFACTURER AS  
REQUIRED PRIOR TO  
INSTALLATION OF PIT

3  
A-7.3  
ELEVATOR SECTION  
3/4" = 1'-0"

2  
A-7.3  
WALL SECTION  
3/4" = 1'-0"

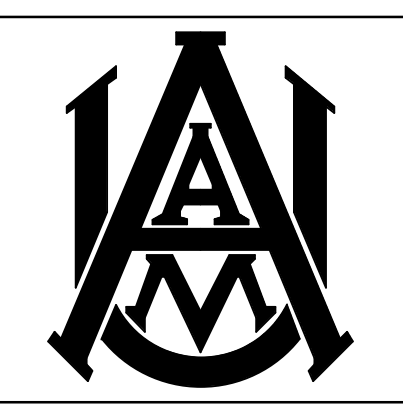
1  
A-7.3  
WALL SECTION  
3/4" = 1'-0"



**NOLA VANPURSEUM**  
ARCHITECTS, P.C.  
MEMBER OF THE AMERICAN INSTITUTE OF ARCHITECTS  
301 JEFFERSON STREET  
HUNTSVILLE, ALABAMA 35801  
(256) 533-6617  
NVPARCHITECTS.COM

THIS DRAWING MAY NOT BE  
REPRODUCED IN WHOLE OR IN  
PART WITHOUT THE CONSENT OF  
NOLAVANPURSEUM ARCHITECTS

ALABAMA A&M UNIVERSITY  
**WELCOME CENTER**  
3000 MERIDIAN ST.  
HUNTSVILLE, ALABAMA



JOB NUMBER  
18994

1/25/2021  
DRAWN - CHECKED - DATE

REVISIONS  
No. Description Date  
1 ADDENDUM 5 3/31/2021

SHEET TITLE  
**WALL SECTIONS**

SHEET NUMBER  
**A-7.3**  
OF

