

SECTION 00 91 16

ADDENDUM NUMBER 7



PARTICULARS

- 1.01 DATE: APRIL 12, 2021
- 1.02 PROJECT: WELCOME CENTER
- 1.03 PROJECT NUMBER: DCM NO. 2020604
- 1.04 OWNER: ALABAMA A&M UNIVERSITY
- 1.05 ARCHITECT: NOLA | VAN PEURSEM ARCHITECTS, PC

TO PROSPECTIVE BIDDERS

- 2.01 THIS ADDENDUM FORMS A PART OF THE CONTRACT DOCUMENTS AND MODIFIES THE BIDDING DOCUMENTS DATED JANUARY 25, 2021, WITH AMENDMENTS AND ADDITIONS NOTED BELOW.
- 2.02 ACKNOWLEDGE RECEIPT OF THIS ADDENDUM IN THE SPACE PROVIDED IN THE PROPOSAL FORM. FAILURE TO DO SO MAY DISQUALIFY THE BIDDER.
- 2.03 THIS ADDENDUM CONSISTS OF 4 PAGES.

CHANGES TO THE PROJECT MANUAL

3.01 SECTION 01 21 00 – ALLOWANCES:

- A. Revise Paragraph 1.05.K to read as follows:
 - K. Include the stipulated sum **of \$278,000** for purchase, delivery, assembly, and placement of the items listed on Sheet FS-1.12 on the Schedule titled “Proprietary Equipment Schedule – Branding and Furnishing”; the items listed on Sheet FS-1.19 on the Schedule titled “Kitchen Equipment Proprietary Schedule (Items Supplied by Trimark Strategic”; **and the items listed on Sheet FS-1.20 on the Schedule titled “Equipment Schedule (Items Supplied by The Food Service Provider).”**
- B. Add Paragraph 1.05.O to read as follows:
 - O. Include the stipulated sum of \$5,000 for the field testing of storefront and curtainwall systems as outlined in the project manual. Should failure occur, any re-testing or additional testing shall be at the contractor’s expense, and not by this allowance.

3.02 SECTION 07 42 64 – METAL COMPOSITE WALL PANELS:

- A. Revise Paragraph 2.06.A. to read as follows, “Factory Finish: A fluoropolymer paint finish that meets or exceeds values expressed in AAMA 2605 where relevant to coil coatings **to be selected from a minimum of 15 standard colors and finishes including solid, metallic, mica, or matte.**”

3.03 SECTION 08 43 50 – ALUMINUM ENTRANCES, STOREFRONT AND CURTAIN WALL:

- A. Revise Paragraph 1.06.F to read as follows, “***Should failure occur during the first test***, the Contractor shall bear the cost of all retesting as well as additional testing of similar specimens as may be requested by the Architect. Testing shall continue at Contractor's expense until 3 consecutive successful tests have been achieved.”

CHANGES TO THE DRAWINGS

4.01 SHEET A-1.4 – SECOND FLOOR PLAN:

- A. Clarification: The desks shown in Open Office 215 are furnishings and will be provided as part of the furniture allowance.

4.02 SHEET FS-1.20 – CFA EQUIPMENT SCHEDULE:

- A. Revise this sheet as follows: Replace the note next to the schedule entitled “Equipment Schedule (Items Supplied by The Food Service Provider)” which reads “These items are listed for reference and are not a part of this contract” with the following: “Scheduled items are by allowance. See Specs”

4.03 SHEET S-2.0 – GENERAL NOTES:

- A. Revise this sheet as follows: Revise Note 1 under the heading “Site & Foundation” to read:
1. A geotechnical engineer, employed by ***the owner***, shall provide compacted fill requirements for the building pad, and review the foundation bearing surface to verify the assumed bearing pressure Noted below. Do not place concrete prior to geotechnical engineer's approval.

4.04 SHEET S-2.3 – STRUCTURAL SCHEDULES:

- A. Replace this Sheet in its Entirety. Revisions include the following:
1. Added wind beam data
 2. Revised columns with high level finish.

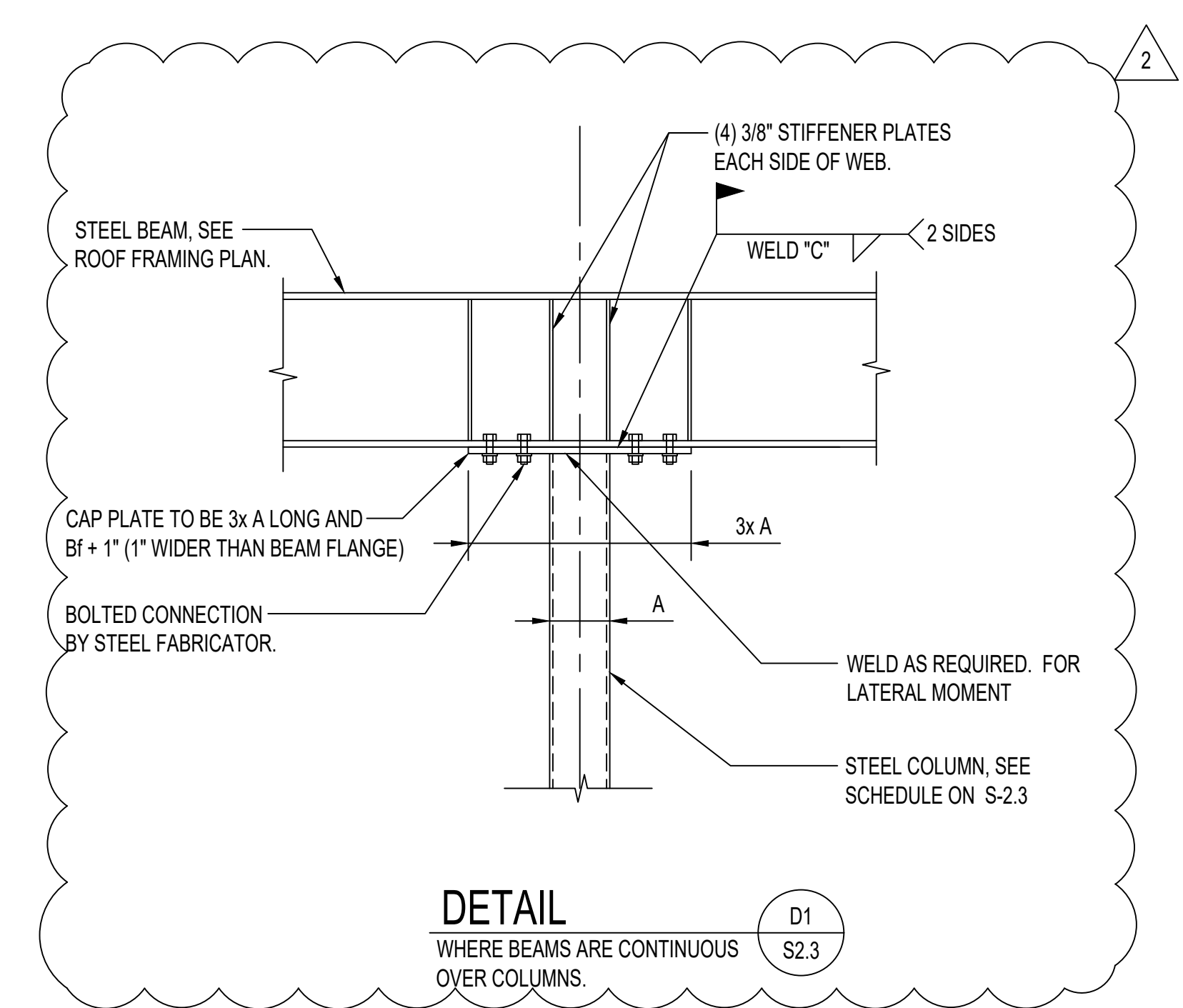
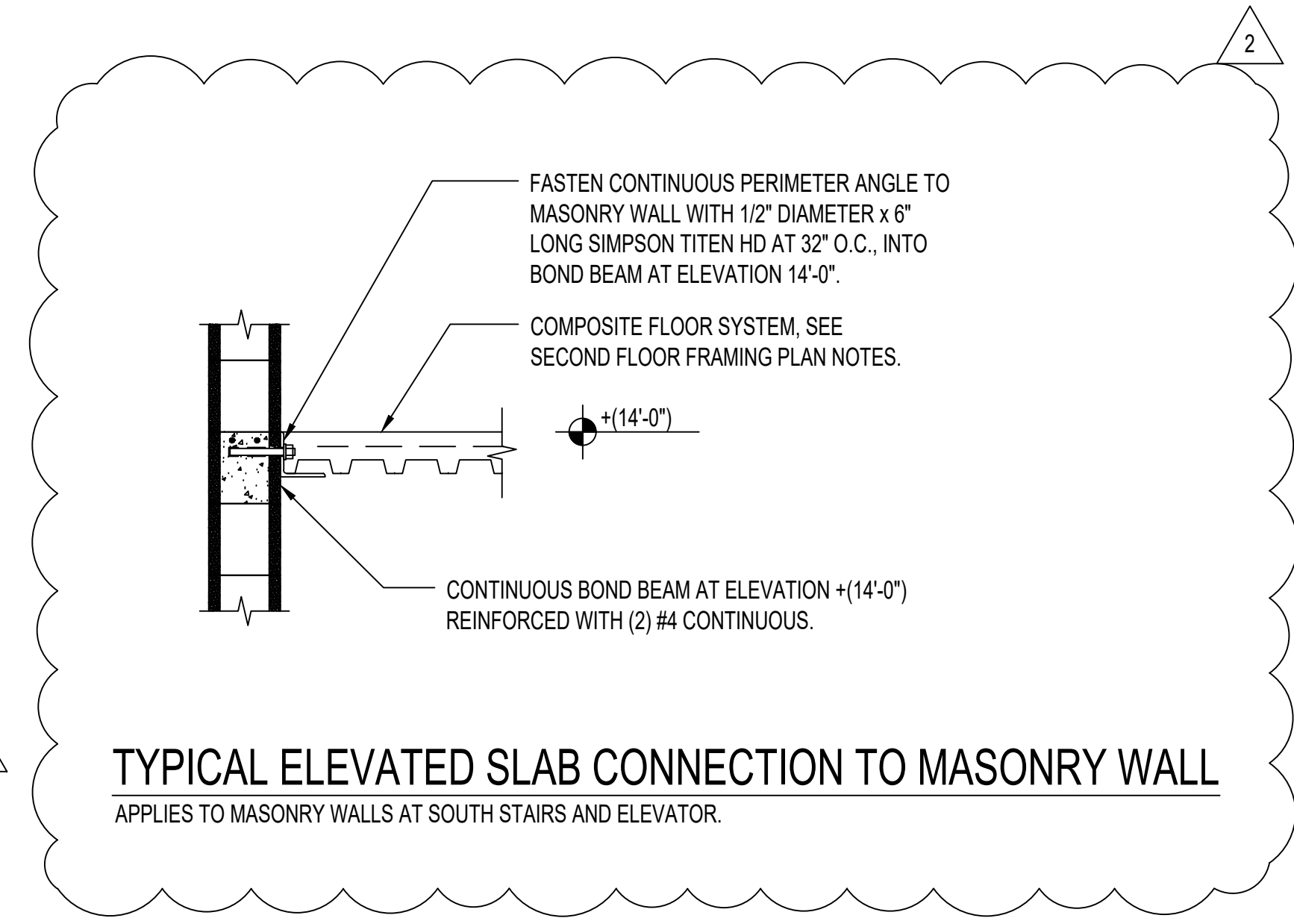
4.05 SHEET S-4.0 – STRUCTURAL ELEVATIONS:

- A. Replace this Sheet in its Entirety. Revisions include the following:
1. Added wind beam at E1/S-4.0.
 2. Added drawing tag at section A/S-4.0

END OF ADDENDUM NUMBER 7

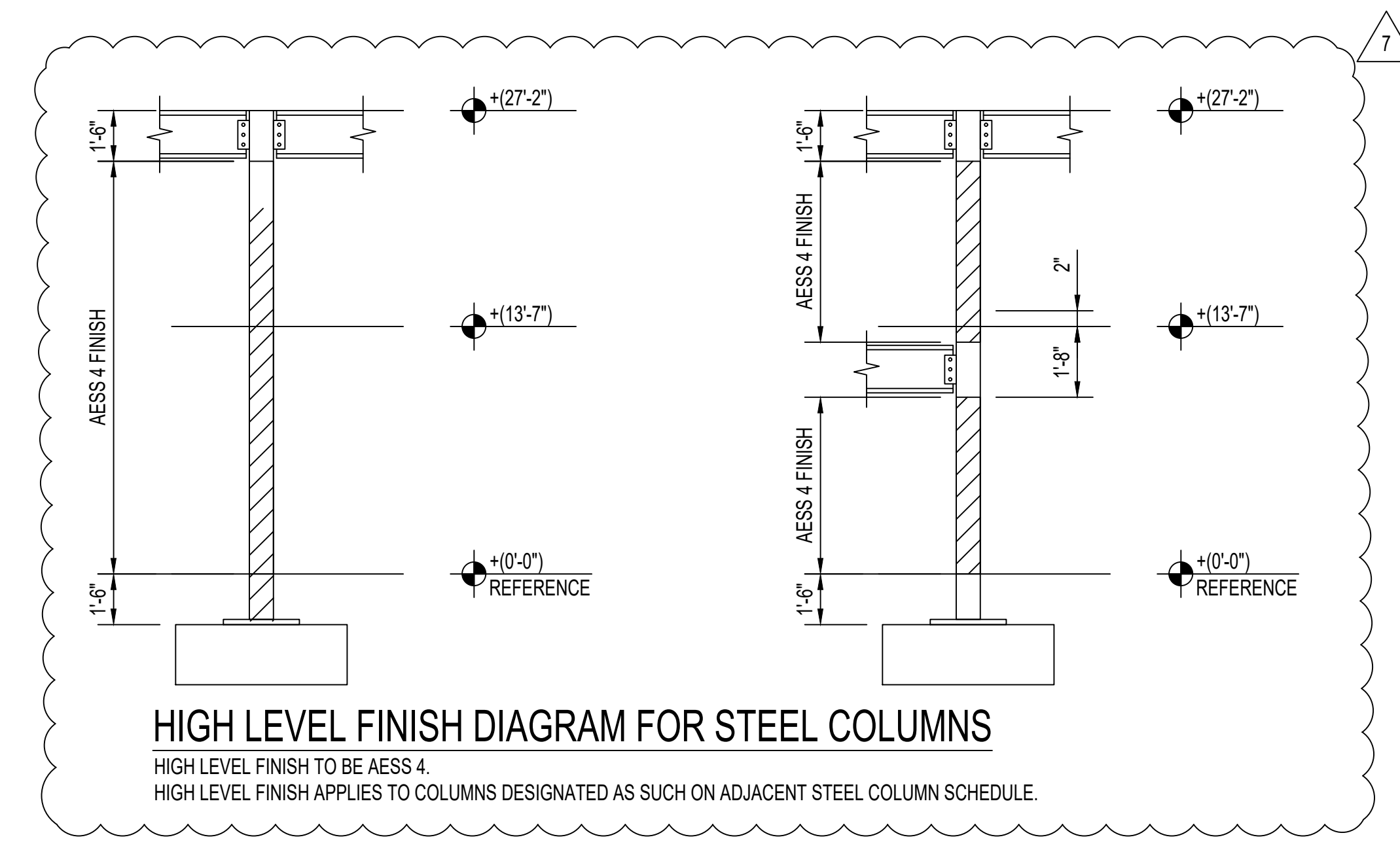
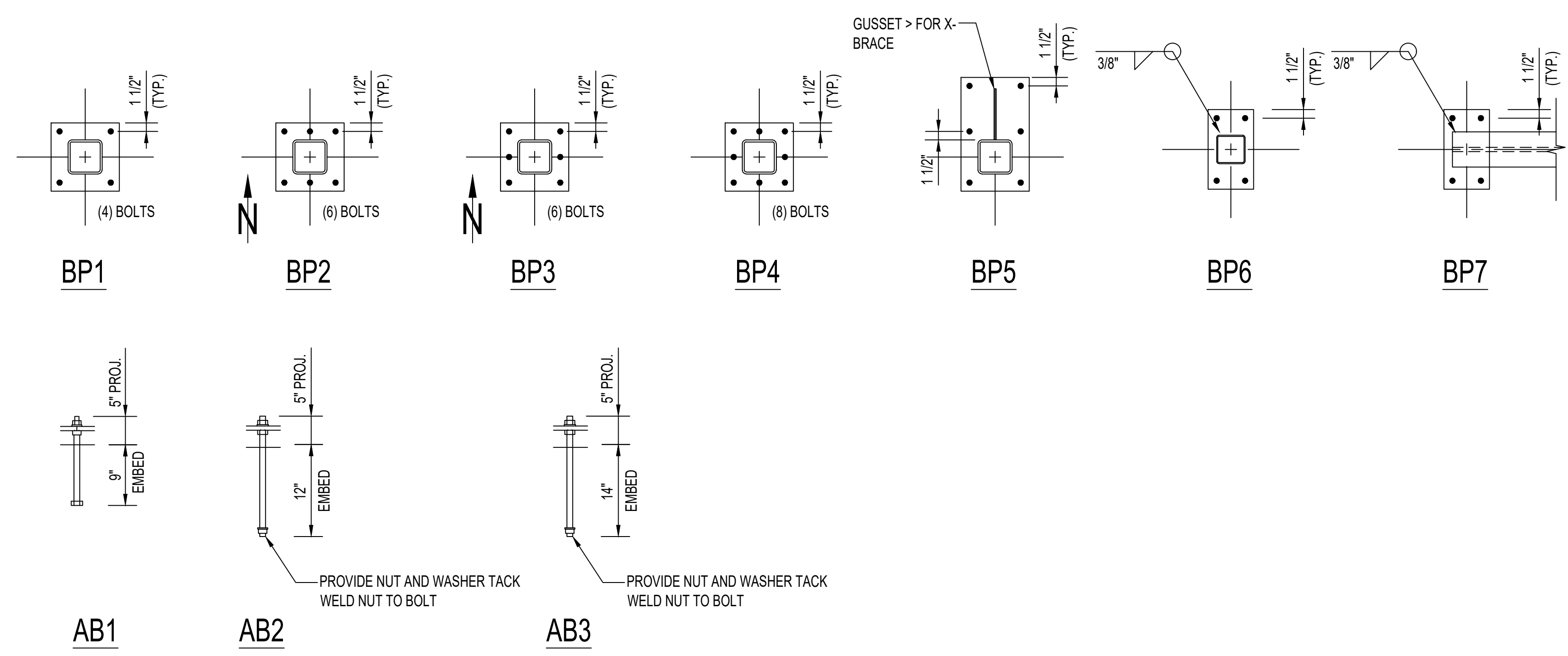
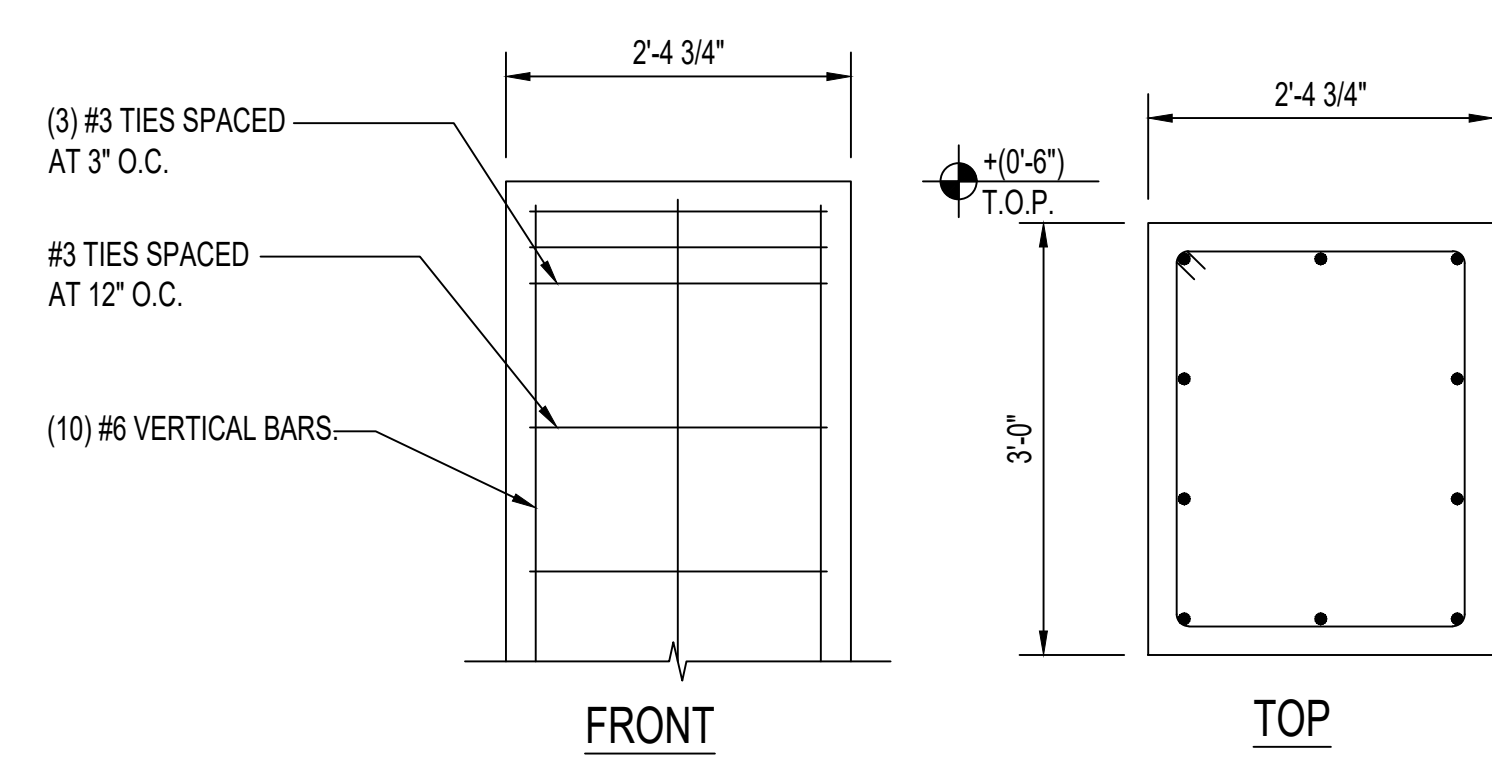
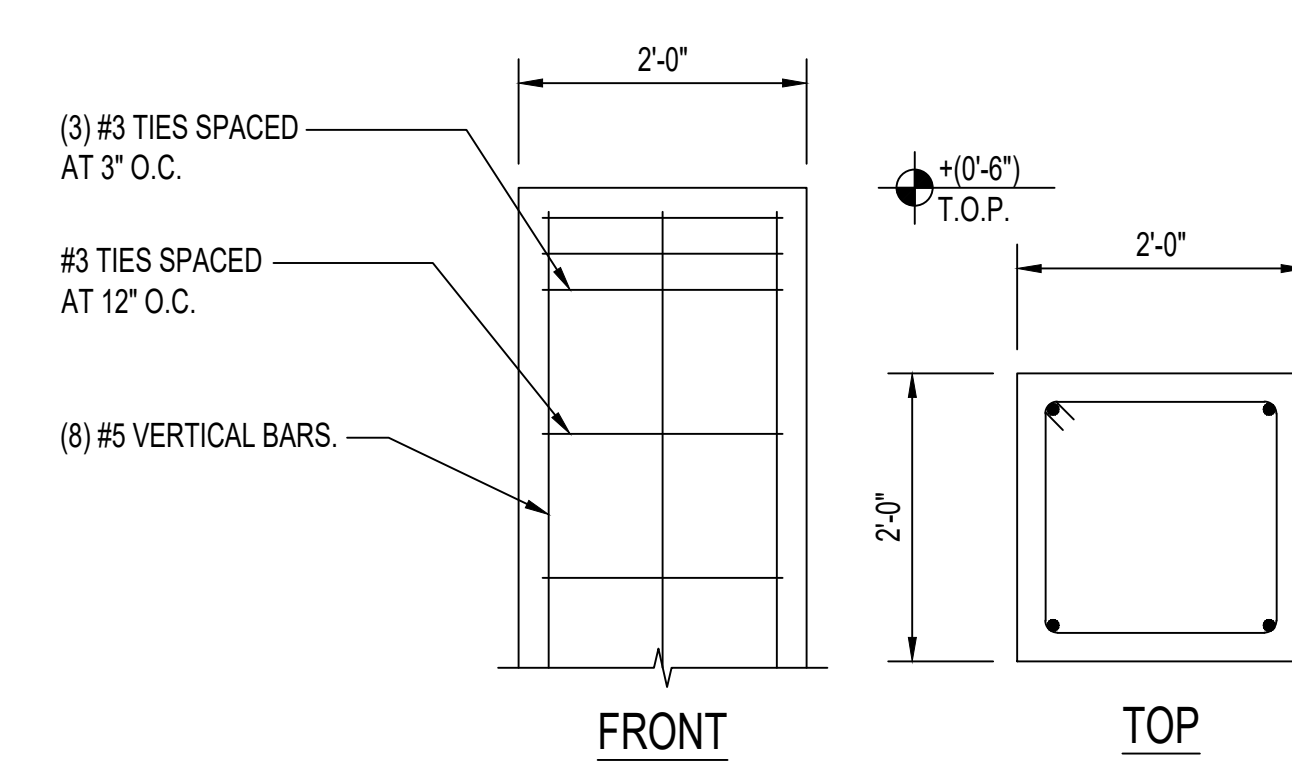
STEEL COLUMN SCHEDULE

COLUMN DESIGNATION	A-1, A-3, A-3.5, A-4, A-4.5, A-5, A-5.5, B-1, B-5.5, C.3-1, C.8-1	B.3-7.8, B.3-8, C-5, C-7, E-7, E-8, F-5, F-6, F-8, G-8	C-3, C-4, C.8-3	C-6, D-6, D-7.2	C.6-5, D.5-5	C.9-2, F-2, F-3, F-4	G-5, G-6, H-2, H-3, H-4, H-5	G-2	K.1-9, K.1-10, K.2-9, K.2-10
CAP PLATE	3/8"	3/8"	3/8"	3/8"	3/8"	3/8"	3/8"	3/8"	3/8"
HIGH ROOF	T.O.S. + (27'-2")								T.O.S. + (20'-0")
LOW ROOF	T.O.S. + (15'-8")								
MEZZANINE	T.O.S. + (13'-7")								
FIRST FLOOR (0'-0")	+ (0'-6")								
BASE PLATE SIZE (IN)	14 x 14 x 3/4	12 x 12 x 3/4	12 x 12 x 3/4	12 x 12 x 3/4	12 x 12 x 3/4	12 x 12 x 3/4	12 x 12 x 3/4	12 x 5 x 3/4	28 x 16 x 3/4
BASE PLATE TYP. DETAIL	SEE BELOW	BP1	BP4	BP1	BP1	BP1	BP1	BP6	SEE S-5.0
ANCHOR BOLT (A307 OR A36)	(6 OR 8) 1"	(4 TO 6) 3/4"	(8) 3/4"	(4) 3/4"	(4) 3/4"	(4 TO 6) 3/4"	(4 TO 6) 3/4"	(4) 3/4"	(4) 3/4" PER COL.
ANCHOR BOLT TYP. DETAIL	AB3	AB1	AB2	AB1	AB1	AB2	AB3	AB1	AB2
PEDESTAL SIZE (IN) VERTICAL BARS TIES TOP OF PEDESTAL ELEV.	24" x 24" (8) #5 #3 + (0'-6")	NONE	NONE	NONE	NONE	NONE	NONE	NONE	36" x 28.75" (10) #6 #3 + (0'-6")
REMARKS	BP2 APPLIES TO: A-3, A-3.5, A-4, A-4.5, A-5, BP3 APPLIES TO: B-1, B-5.5, C.3-1, BP4 APPLIES TO: A-1, A-5.5, C.9-1.	BP5 AT: B.3-8 AND F-5 HIGH LEVEL FINISH C-7, F-8, G-8	HIGH LEVEL FINISH OF THESE THREE COLUMNS	HIGH LEVEL FINISH C-6		BP5 AT: F-2	BP5 AT: H-4 *OFFSET COL. G-5 2'-9" EAST, SEE ELEVATION E314.0 ** (2) COLUMNS AT G-6. SEE SECTION S-5.0 T.O.S. AT H-2 IS + (20'-0") (E1184.0)		(1) BASE PLATE PER PAIR OF COLUMNS. BASE PLATE DETAIL ON S-5.0



COMPONENTS AND CLADDING TABLE							
WIND PRESSURES (P.S.F.)							
ZONE	EWA	O.H.	GCp*	GCp*	D(+)	D(-)	
1	10	No	0.3	-1.0	6	-15	
1	20	No	0.3	-1.0	6	-14	
1	50	No	0.2	-0.9	5	-14	
1	100	No	0.2	-0.9	5	-13	
2	10	No	0.3	-1.8	6	-24	
2	20	No	0.3	-1.8	6	-22	
2	50	No	0.2	-1.3	5	-18	
2	100	No	0.2	-1.1	5	-16	
2	10	Yes	N/A	-1.7	N/A	-23	
2	20	Yes	N/A	-1.7	N/A	-23	
2	50	Yes	N/A	-1.6	N/A	-22	
2	100	Yes	N/A	-1.6	N/A	-22	
3	10	No	0.3	-2.8	6	-37	
3	20	No	0.3	-2.3	6	-30	
3	50	No	0.2	-1.6	5	-22	
3	100	No	0.2	-1.1	5	-16	
3	10	Yes	N/A	-2.8	N/A	-37	
3	20	Yes	N/A	-2.2	N/A	-29	
3	50	Yes	N/A	-1.4	N/A	-19	
3	100	Yes	N/A	-1.4	N/A	-19	
4	10	No	1.0	-1.1	15	-16	
4	20	No	0.9	-1.0	14	-15	
4	50	No	0.9	-1.0	13	-14	
4	100	No	0.8	-0.9	12	-14	
4	200	No	0.8	-0.9	12	-13	
5	10	No	1.0	-1.4	15	-19	
5	20	No	0.9	-1.3	14	-18	
5	50	No	0.9	-1.2	13	-16	
5	100	No	0.8	-1.0	12	-15	
5	200	No	0.8	-0.9	12	-14	
4P	10		2.8	-2.1	34	-26	
4P	20		2.5	-2.0	31	-25	
4P	50		2.2	-1.9	27	-23	
4P	100		1.9	-1.7	24	-21	
5P	10		3.8	-2.4	47	-30	
5P	20		3.2	-2.2	40	-28	
5P	50		2.6	-2.0	31	-25	
5P	100		1.9	-1.9	24	-23	

NOTES:
1- PLUS AND MINUS SIGNS DENOTE PRESSURE ACTING TOWARDS AND AWAY FROM BUILDING SURFACE
2- ONE-THIRD STRESS INCREASE IS NOT ALLOWED.



BRICK LINTEL SCHEDULE

MAXIMUM OPENING WIDTH	STEEL FOR EACH 4" OF WALL THICKNESS
4'-0"	L3 1/2x3 1/2x5/16
6'-0"	L5x3 1/2x3/8 (LLV)
8'-0"	L6x3 1/2x3/8 (LLV)
12'-0"	L7x4x3/8 (LLV)

PROVIDE 8" MINIMUM BEARING EACH END FOR ALL LINTELS. PROVIDE ADDITIONAL L4x3x1/4 (LLH) ANGLE WITH LINTEL ANGLE TO COVER GAP BETWEEN WALL FRAMING AND BRICK AS REQUIRED. WELD ANGLES BACK-TO-BACK WITH 1/4"x2" LONG WELD AT 16" O.C. THIS SCHEDULE APPLIES UNLESS NOTED OTHERWISE ON PLANS OR SECTIONS.

REQUIRED SUBMITTALS:		
SPEC. SECTION	SPEC. SECTION TITLE	REQUIRED SUBMITTAL
03200	CONCRETE REINFORCEMENT	SHOP DRAWINGS MATERIAL CERTIFICATES WELDERS CERTIFICATES
03300	CONCRETE	PRODUCT DATA DESIGN MIXES MANUFACTURER'S INSTALLATION INSTRUCTIONS PROJECT RECORD DOCUMENTS
04810	UNIT MASONRY	PRODUCT DATA
05120	STRUCTURAL STEEL	SHOP DRAWINGS
05310	STEEL DECK	SHOP DRAWINGS PRODUCT DATA MANUFACTURER'S INSTALLATION INSTRUCTIONS
05400	COLD-FORMED STEEL FRAMING	PRODUCT DATA SHOP DRAWINGS TRUSS SHOP DRAWINGS

TENSION LAP SPLICE LENGTHS								
BAR SIZE	f _c = 3000 PSI				f _c = 4000 PSI			
	TOP BARS		OTHER BARS		TOP BARS		OTHER BARS	
	A	B	A	B	A	B	A	B
#3	22"	28"	17"	22"	19"	24"	15"	19"
#4	29"	37"	22"	29"	25"	32"	19"	25"
#5	36"	47"	28"	36"	31"	40"	24"	31"
#6	43"	56"	33"	43"	37"	48"	29"	37"
#7	63"	81"	48"	63"	54"	70"	42"	54"
#8	72"	93"	55"	72"	62"	80"	48"	62"
#9	81"	105"	62"	81"	70"	91"	54"	70"
#10	91"	118"	70"	91"	79"	102"	61"	79"
#11	101"	131"	78"	101"	87"	113"	67"	87"

1) TOP BARS ARE HORIZONTAL REINFORCEMENT WITH MORE THAN 12" OF CONCRETE CAST BELOW THE REINFORCEMENT.
2) MASONRY REINFORCING LAP SPLICE LENGTHS SHALL BE 48x BAR DIAMETER.



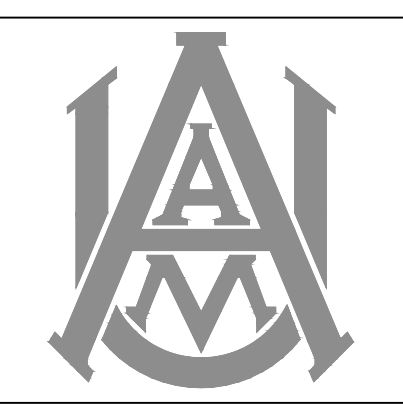
P.R. Matthewson & Associates Engineers, Inc.
485 University Square, Suite 17,
Birmingham, AL 35216 Phone: (205) 632-6818
Project No. 1879



NOLA VANPEURSEM
ARCHITECTS, PC
MEMBER OF THE AMERICAN INSTITUTE OF ARCHITECTS
301 JEFFERSON STREET
HUNTSVILLE, ALABAMA 35891
(256) 533-6617
NVPARCHITECTS.COM

THIS DRAWING MAY NOT BE REPRODUCED IN WHOLE OR IN PART WITHOUT THE CONSENT OF NOLA VANPEURSEM ARCHITECTS

ALABAMA A&M UNIVERSITY
WELCOME CENTER
4800 MERIDIAN ST.
HUNTSVILLE, ALABAMA



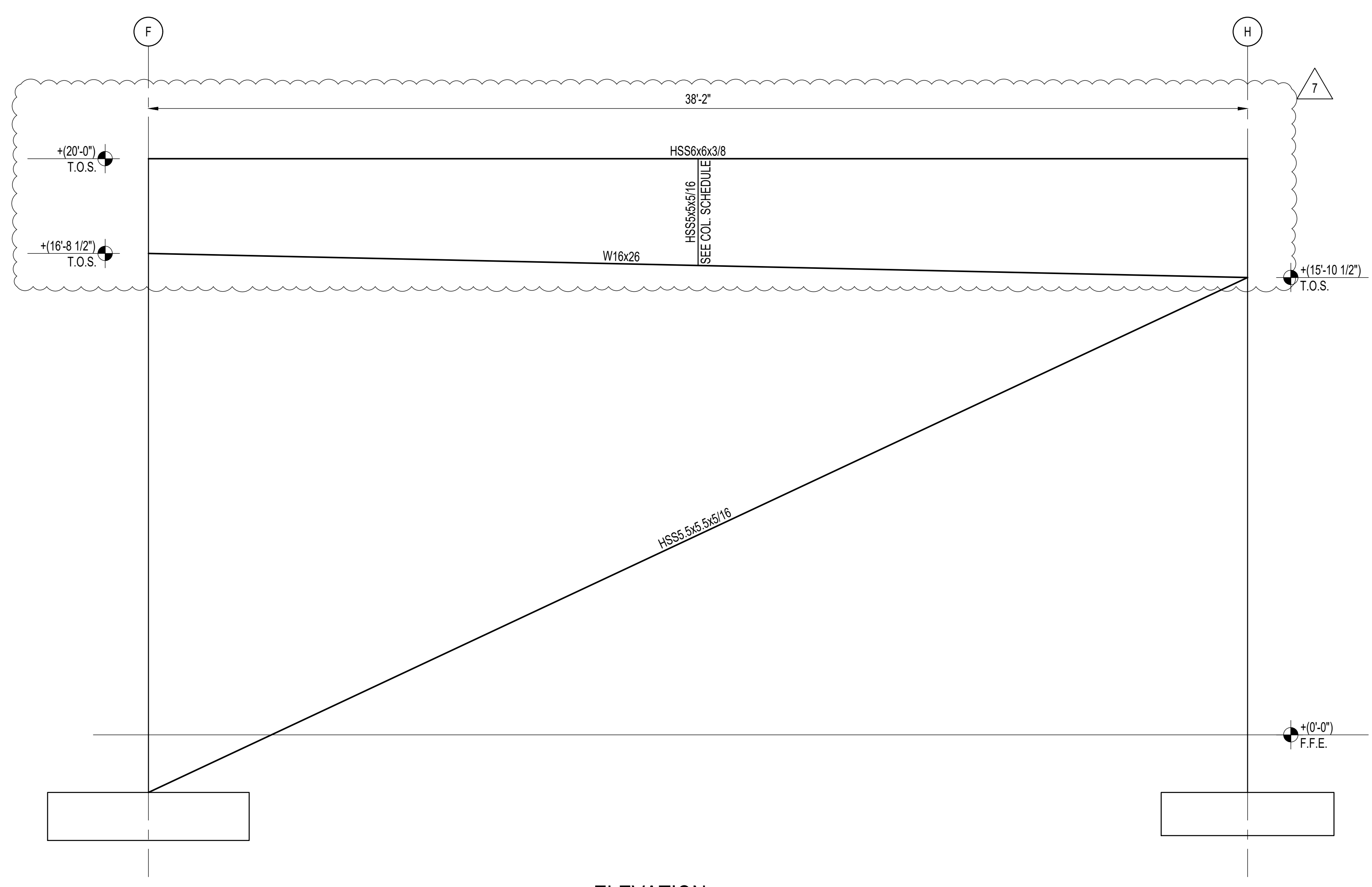
JOB NUMBER
18994

JEK / PRM / 01/25/2021
DRAWN - CHECKED - DATE

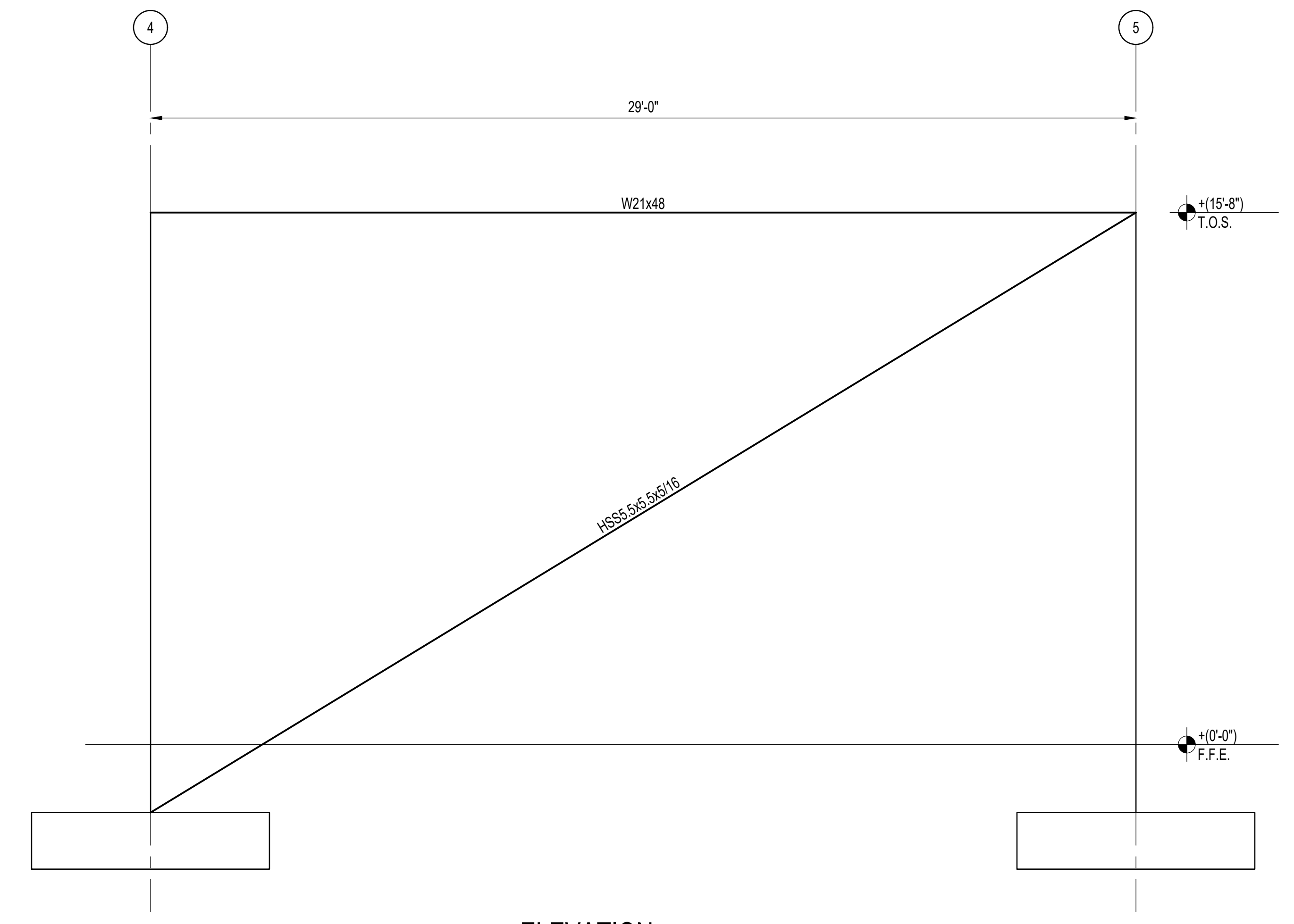
REVISIONS	No.	Description	Date
	2	Elevated Slab Conn.	2/13/21
	6	Slabs	4/2/21
	7	Wind Beam	4/8/21

SHEET TITLE
STRUCTURAL ELEVATIONS

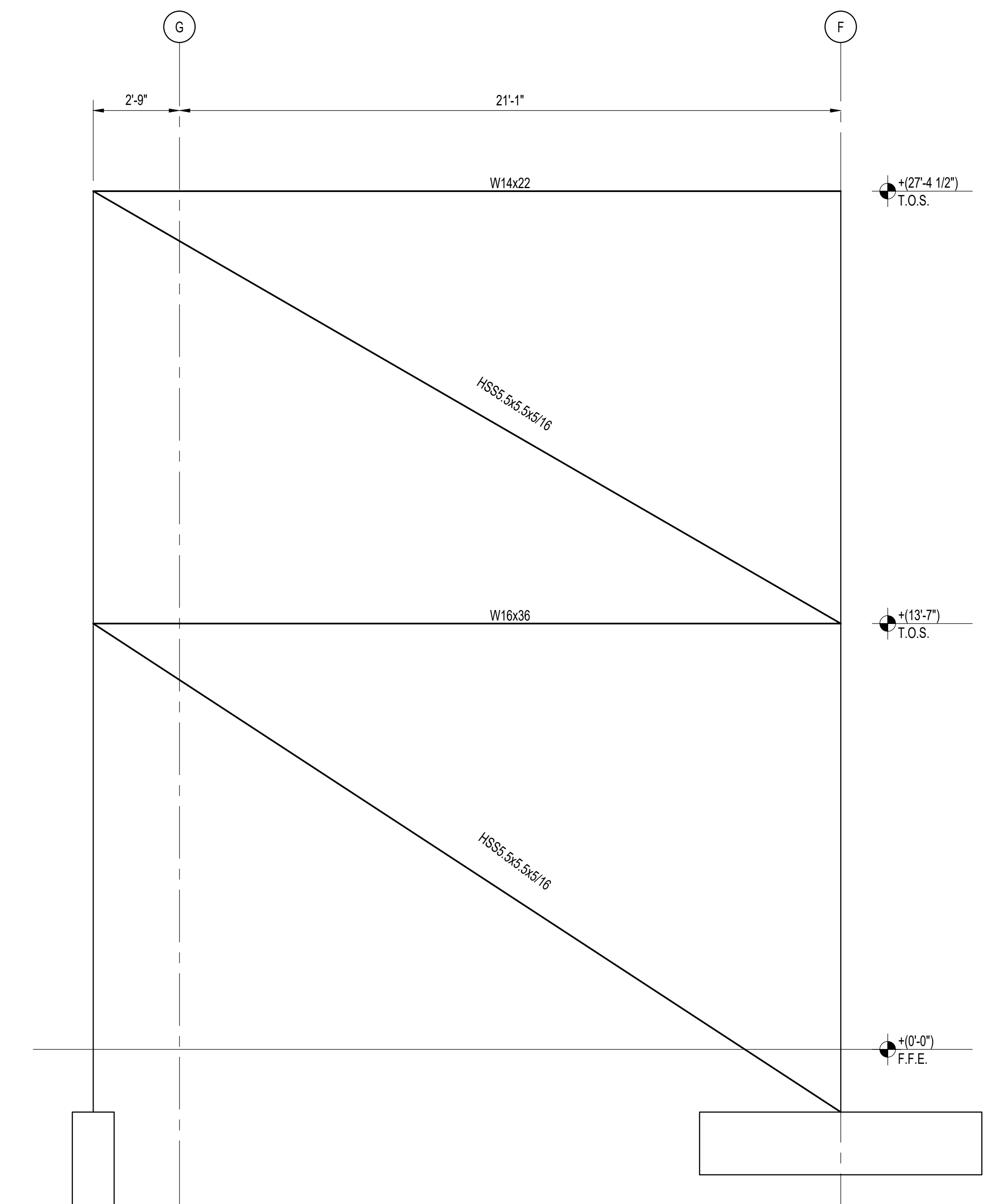
SHEET NUMBER
S-4.0
OF
16



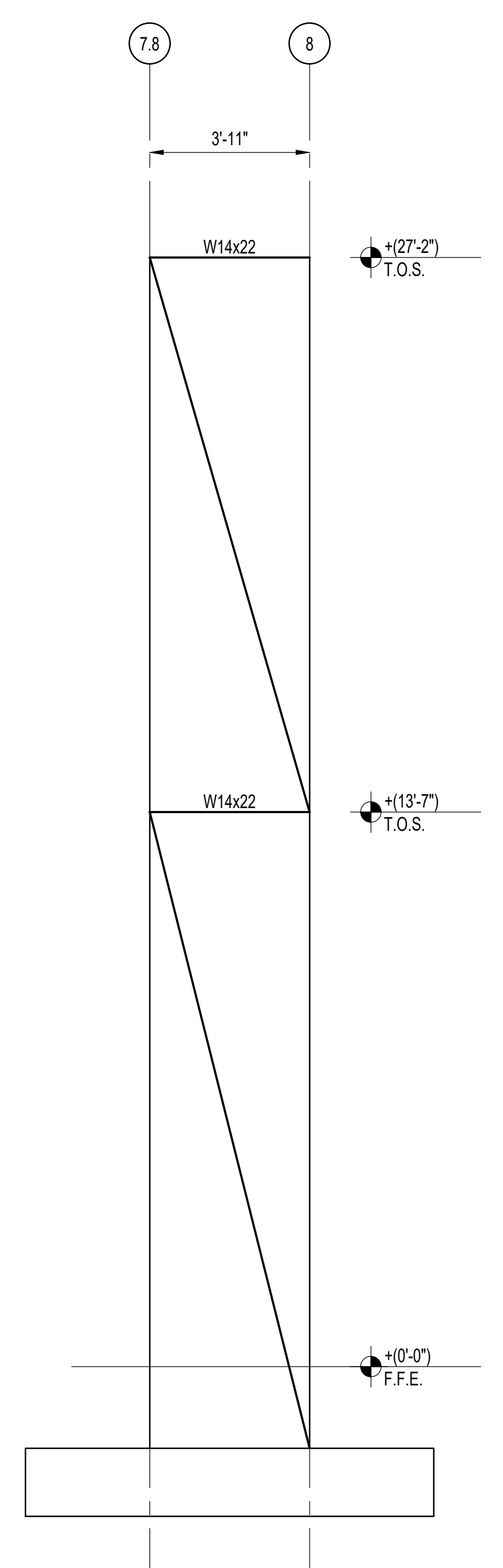
ELEVATION E1
SCALE 3/8" = 1'-0"
S4.0



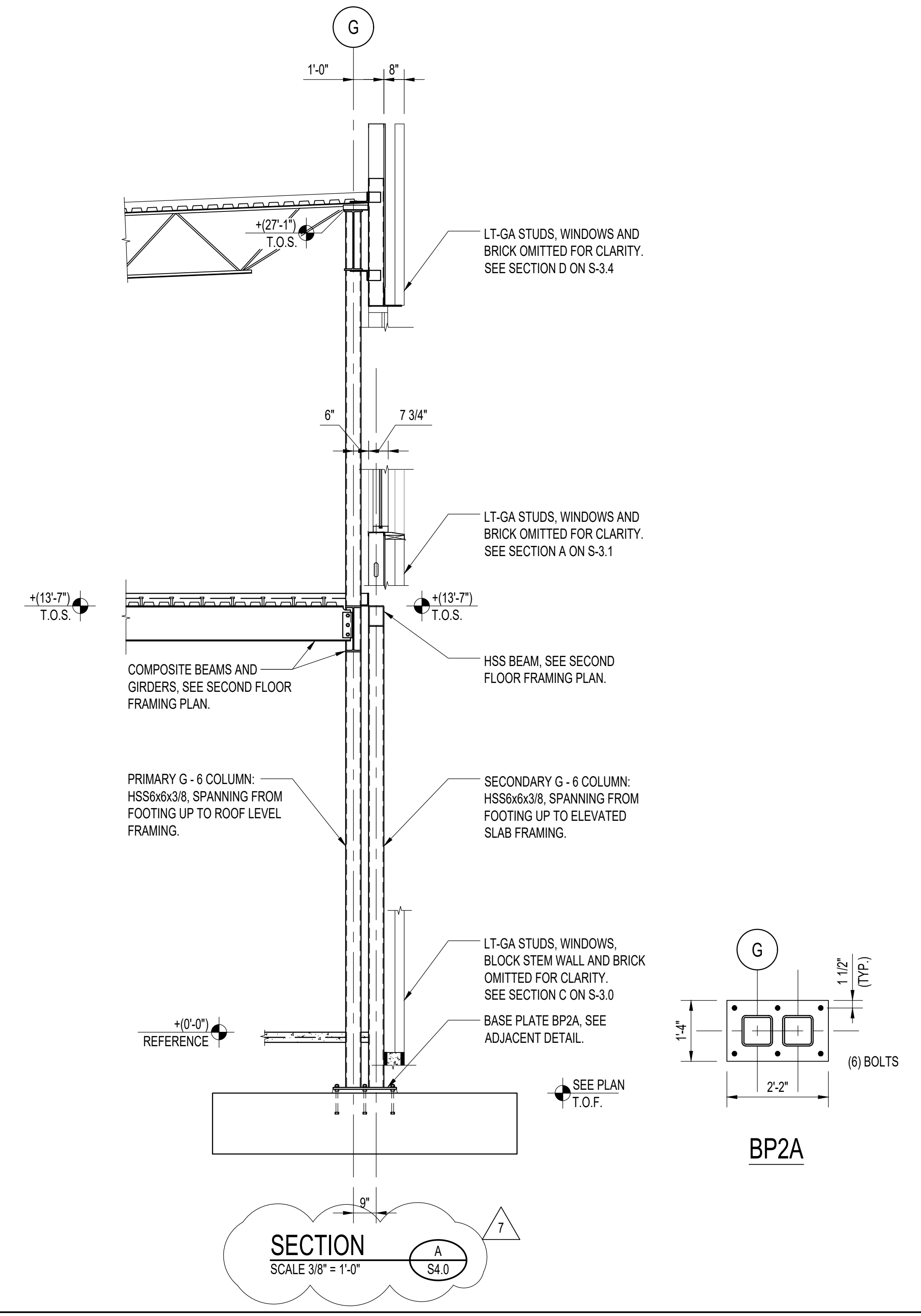
ELEVATION E2
SCALE 3/8" = 1'-0"
S4.0



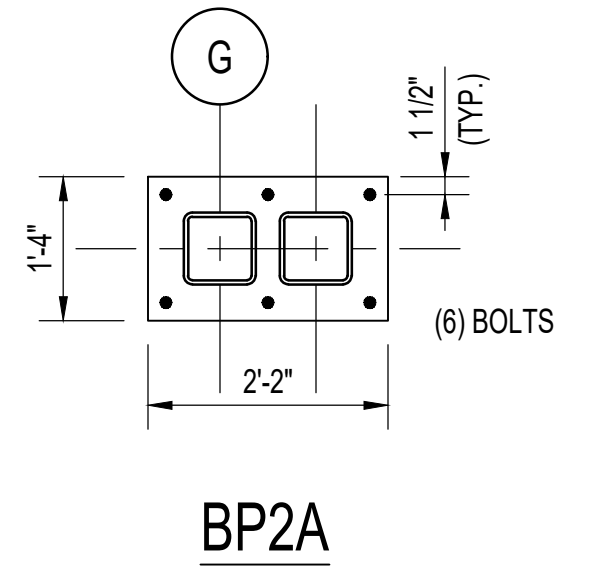
ELEVATION E3
SCALE 3/8" = 1'-0"
S4.0



ELEVATION E4
SCALE 3/8" = 1'-0"
S4.0



SECTION A
SCALE 3/8" = 1'-0"
S4.0



BP2A

01/25/2021 1:26:17 PM